

# What power supply should be used with the Mi Li battery cabinet





## Overview

---

Which power supplies are compatible with lithium-ion battery technology?

All units are compatible with Lithium-Ion battery technology, designed to deliver superior reliability among backup power equipment suppliers. Mitsubishi Electric 9900D series industrial Uninterruptible Power Supply (UPS) has been designed to deliver superior reliability to satisfy the relentless demands of cloud and colocation data centres.

How do you charge a lithium ion battery with a power supply?

Charging with a power supply requires you to set both voltage and current limits for each cell. For most lithium-ion chemistries, such as NMC Lithium battery, LCO Lithium battery, and LMO Lithium battery, you set the full charge voltage at 4.20V per cell. For LiFePO4 Lithium battery, you set the voltage at 3.65V per cell.

What is the MAQ for lithium batteries in a room?

a. MAQ for lithium batteries in a room is 600 kWh. If the amount of lithium battery capacity in the room exceeds the MAQ, then 'Hazardous Class H-2' room construction is required. This means the room must meet stricter fire rating and other fire and building code requirements.

Does Eaton offer lithium battery cabinets?

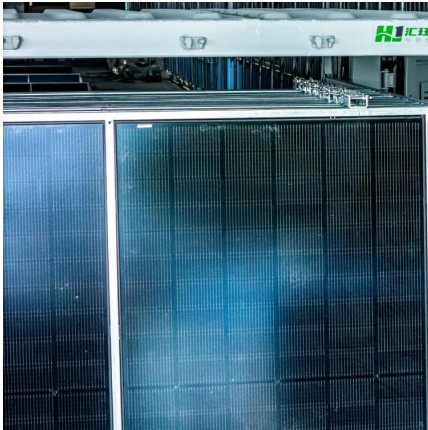
This document will serve as a guide for Eaton salespersons, sales support personnel, engineering clients, and end users who have questions regarding the lithium battery cabinets used with Eaton UPS systems. 1) Which vendors does Eaton offer?

a. Samsung cabinets containing 128 or 136 battery cells (16 or 17 battery modules respectively).



## What power supply should be used with the Mi Li battery cabinet

---



### How to Charge Different Types of Batteries with a Power Supply

When you handle charging with a power supply, you must set voltage and current precisely for each battery chemistry. The table below demonstrates how different lithium ...

[Get Price](#)



### [Can You Use a Power Supply to Charge a Lithium Battery?](#)

Lithium batteries can be charged with a power supply, but it requires proper settings, monitoring, and precautions for optimal performance.

### [Can I Charge a Lithium Battery with a Power ...](#)

Recommended Alternatives Using a power supply to charge a lithium battery is common, but there are alternatives to charging your batteries. For starters, consider using a dedicated lithium battery charger; ...

[Get Price](#)



### The Complete Guide to Choosing a Safe and Reliable Battery Storage Cabinet

Learn everything about choosing a safe, compliant, and effective battery storage cabinet. Explore features, risks, maintenance practices, cabinet types, and essential safety considerations for ...

[Get Price](#)



[Get Price](#)



### [Lithium-Ion UPS FAQs , Mitsubishi Electric](#)

What are the main advantages of a lithium-ion battery in UPS (Uninterruptible Power Supply) applications? What are the potential disadvantages of a lithium-ion battery in UPS ...

[Get Price](#)



### **Eaton s lithium-ion UPS battery Q& A**

2 systems, there is no transformer in the conduit landing box; the battery cabinet internal power supply will be provisioned with a 480VAC or 208VAC input based on the user's ...

[Get Price](#)



### [SmartLi 3.0 User Manual \(Long-Term Backup Power\)](#)

Purpose This document describes the SmartLi 3.0 (long-term backup power) intelligent lithium battery cabinet (lithium battery cabinet for short) in terms of its overview, transportation, ...

[Get Price](#)





## UPS & Lithium-Ion Battery Solutions

Paired with the BCL04-BB Lithium-ion Battery Cabinet, these UPS on battery systems offer a streamlined approach to power protection--ideal for facilities seeking efficient, expandable ...

[Get Price](#)



## UPS & Lithium-Ion Battery Solutions

Paired with the BCL04-BB Lithium-ion Battery Cabinet, these UPS on battery systems offer a streamlined approach to power protection--ideal for facilities seeking efficient, expandable energy security without sacrificing floor space.

[Get Price](#)



## [Can I Charge a Lithium Battery with a Power Supply?](#)

Recommended Alternatives Using a power supply to charge a lithium battery is common, but there are alternatives to charging your batteries. For starters, consider using a ...

[Get Price](#)



## [How to design an energy storage cabinet: integration and...](#)

The following are several key design points:  
Modular design: The design of the energy storage cabinet should adopt a modular structure to facilitate expansion, maintenance ...

[Get Price](#)





### [How to Charge Different Types of Batteries ...](#)

When you handle charging with a power supply, you must set voltage and current precisely for each battery chemistry. The table below demonstrates how different lithium variants require unique charge ...

[Get Price](#)



### [Cabinet-type lithium battery as backup power supply and ...](#)

Cabinet-type lithium battery is an energy storage device or power supply device designed in the form of a cabinet with lithium-ion battery as the core. It is usually designed to ...

[Get Price](#)



## Contact Us

---

For catalog requests, pricing, or partnerships, please visit:  
<https://www.germansolar.co.za>

**Scan QR Code for More Information**



<https://www.germansolar.co.za>