

What are the communication power equipment base stations





Overview

What is a base station in a telecommunications network?

A base station is a critical component in a telecommunications network. A fixed transceiver that acts as the central communication hub for one or more wireless mobile client devices. In the context of cellular networks, it facilitates wireless communication between mobile devices and the core network.

What are base stations & how do they work?

Base stations are the critical components that enable mobile phones and other devices to connect to cellular networks. Here's how they work in a typical mobile network: Signal Transmission and Reception: Mobile devices communicate with the nearest base station via radio waves.

What equipment does a base station need?

Control Equipment: Base stations include control equipment that manages the communication protocols and coordinates the interaction between mobile devices and the network. This equipment ensures that data is routed correctly and efficiently. Power Supply: A reliable power supply is essential for the continuous operation of a base station.

What are the components of a base station?

The base station will have one or more RF antennas installed to transmit and receive RF signals from other devices. The block diagram of a base station typically includes the following key components: Baseband Processor: The baseband processor too deals with different communication protocols and interfaces with mobile network infrastructure.



What are the communication power equipment base stations



What is a Base Station in ...

What is a Base Station? A base station is a critical component in a telecommunications network. A fixed transceiver that acts as the central communication hub for one or more wireless mobile client devices. In the ...

[Get Price](#)

[What is Telecommunication Base Station , China Hop](#)

What is telecommunication base station, let's learn about communication base stations. China telecom equipment supplier.

[Get Price](#)



[What is a Base Station? -- From Communication Core to ...](#)

Base stations are the core of mobile communication, and with the rise of 5G, thermal and energy challenges are increasing. This article explains the definition, structure, ...

[Get Price](#)



[What is a Base Station in Telecommunications?](#)

What is a Base Station? A base station is a critical component in a telecommunications network. A fixed transceiver that acts as the central communication hub for one or more wireless mobile ...



[Get Price](#)



[Base Stations and Cell Towers: The Pillars of Mobile ...](#)

Base stations and cell towers are critical components of cellular communication systems, serving as the infrastructure that supports seamless mobile connectivity. These ...

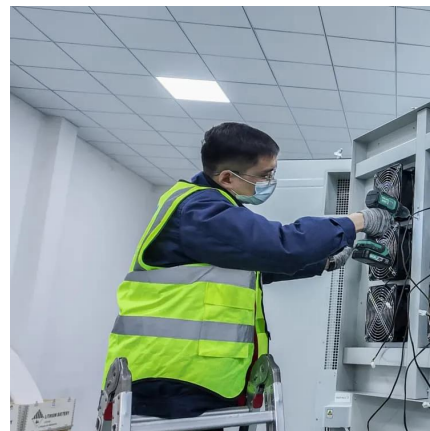
[Get Price](#)



What Is A Base Station?

A base station is an integral component of wireless communication networks, serving as a central point that manages the transmission and reception of signals between ...

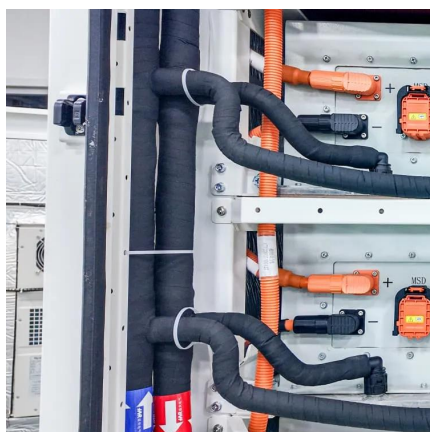
[Get Price](#)



[Mobile Communication Base Stations - Compere](#)

Base station construction requires the coordination of multiple resources and is hindered by difficult site selection and stringent compliance requirements, resulting in long ...

[Get Price](#)



[What are Base Station in Telecommunications?](#)



The Role and Importance of Base Stations Base stations enable voice, data, and internet access. They transmit radio signals within a set area. You stay connected as you ...

[Get Price](#)



Understanding Base Stations: The Backbone of Wireless Communication

In today's digital age, reliable and high-speed communication is more essential than ever. Whether it's for mobile phones, internet services, or IoT (Internet of Things) devices, ...

[Get Price](#)



Base Stations

The present-day tele-space is incomplete without the base stations as these constitute an important part of the modern-day scheme of wireless communications. They are ...

[Get Price](#)



Base Stations

The present-day tele-space is incomplete without the base stations as these constitute an important part of the modern-day scheme of wireless communications. They are referred to as cell towers or cellular ...

[Get Price](#)

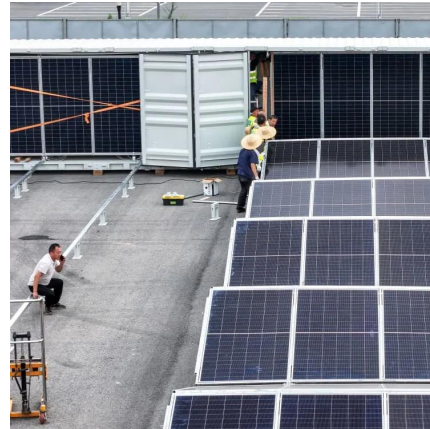


[What Does a Base Station Do and Why Is It Essential for ...](#)



Control Equipment: Ensures smooth communication between mobile devices and the core network. Power Supply: Keeps everything running--often supported by backup ...

[Get Price](#)



Contact Us

For catalog requests, pricing, or partnerships, please visit:
<https://www.germansolar.co.za>

Scan QR Code for More Information



<https://www.germansolar.co.za>