

What are the base stations for Fiji communication engineering





Overview

When did Fiji start a radio station?

1911: Fiji became the first country south of the equator to have a commercial radio station, showcasing its early leadership in communication technology. 1937: Overhead lines were constructed between Lautoka and Nadi, with a 50-line exchange going into service. This period also saw the development of telephone pole routes between major towns.

Where are Google telecommunications cables landed in Fiji?

Picture: SUPPLIED. THE Bulikula and Tabua undersea telecommunications cables by Google have landed at the Fiji International Telecommunications Ltd's (FINTEL) landing facility in Vatuwaqa, Suva, opening Fiji up to unprecedented regional and international connectivity and significant opportunities in domestic economic growth.

When did Fiji start telecommunications?

1900: The Department of Posts & Telecommunications was transferred to Fiji Posts & Telecommunication Limited (FPTL), marking the beginning of Fiji's telecommunications journey. 1904: A telephone line was established between Suva and Levuka, using an overhead pole route and submarine cable.

Will Fiji be anchored by a cable landing station?

The facility will be anchored by a cable landing station, housing four Google-built subsea cables. The cables will connect Fiji to the US, Australia, Japan, and South America. Other specifications of the project have not yet been shared.



What are the base stations for Fiji communication engineering



[Google breaks ground on Fiji cable landing ...](#)

In a recent LinkedIn post, Shaheen Ali, secretary of trade, co-operatives, and communications in Fiji, said: "Yesterday, I had the privilege of participating in a truly transformative moment for Fiji and our region - the ...

[Get Price](#)

[Fiji is Looking to Build Upon its Success of 4G ...](#)

The total number of base stations will increased from the 390 to more than 600 base stations in 2019 around the country. Almost all existing and new base stations are providing 4G+ coverage. This made ...

[Get Price](#)



[Australia based company invests \\$1.7m to boost Fiji](#)

Australia based company invests \$1.7m to boost Fiji's telecommunication sector Australia based telecommunications company; Fibre Network Engineering (FNE) ...

[Get Price](#)

Fiji Government

"The ICT facility will house the second cable landing station in Viti Levu, and one which will strengthen Fiji's internet connectivity, and make it more resilient, with two landings ...



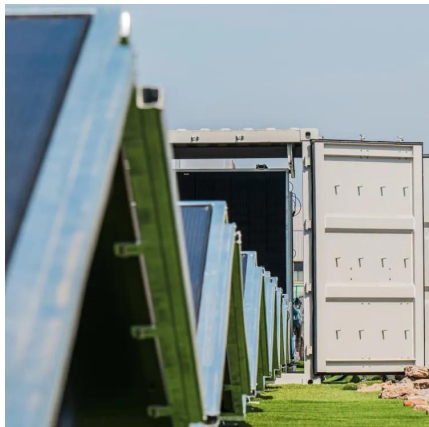
[Get Price](#)



Base Stations

The present-day tele-space is incomplete without the base stations as these constitute an important part of the modern-day scheme of wireless communications. They are referred to as cell towers or cellular ...

[Get Price](#)



[Australia based company invests \\$1.7m to ... to ...](#)

Australia based company invests \$1.7m to boost Fiji's telecommunication sector Australia based telecommunications company; Fibre Network Engineering (FNE) Communications set up its operations ...

[Get Price](#)



[Mobile network rollout in Fiji with antennas](#)

In the tropical paradise of Fiji, Ericsson, its Australian partner Maser, and a top Fijian communication service provider (CSP) have teamed up to install 700 mid-band passive ...

[Get Price](#)





Fiji Wireless Frequency Bands and Carriers

2023: Ericsson, Maser, and a top Fijian communication service provider collaborated to install 700 mid-band passive antennas across over 250 base stations, enhancing connectivity and ...

[Get Price](#)



Fintel

Satellite, LEO Gateway Facilities and Management In addition to being Fiji's only Cable Landing Station, FINTEL has strategically positioned itself as a regional hub by offering colocation services for Low Earth Orbit (LEO) ...

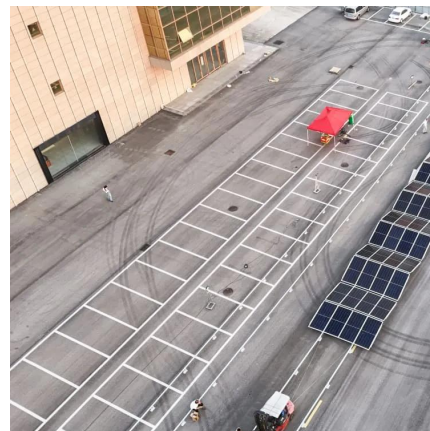
[Get Price](#)



Base Stations

The present-day tele-space is incomplete without the base stations as these constitute an important part of the modern-day scheme of wireless communications. They are ...

[Get Price](#)



Cables have landed

THE Bulikula and Tabua undersea telecommunications cables by Google have landed at the Fiji International Telecommunications Ltd's (FINTEL) landing facility in ...

[Get Price](#)



[Google breaks ground on Fiji cable landing station](#)

In a recent LinkedIn post, Shaheen Ali, secretary of trade, co-operatives, and communications in Fiji, said: "Yesterday, I had the privilege of participating in a truly ...

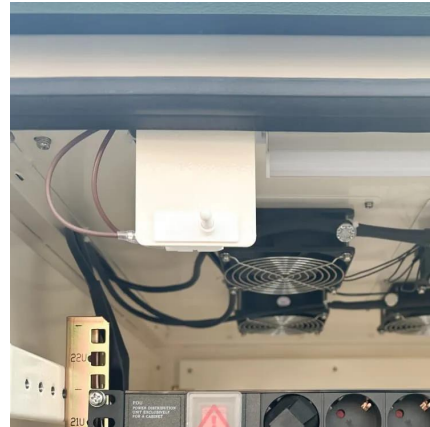
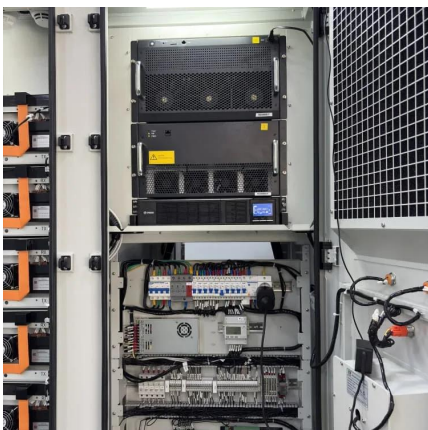
[Get Price](#)



Fiji Government

"The ICT facility will house the second cable landing station in Viti Levu, and one which will strengthen Fiji's internet connectivity, and make it more resilient, with two landings stations, one in the Central Division ...

[Get Price](#)



Cables have landed

THE Bulikula and Tabua undersea telecommunications cables by Google have landed at the Fiji International Telecommunications Ltd's (FINTEL) landing facility in Vatuwaqa, Suva, opening Fiji up to ...

[Get Price](#)



[Fiji is Looking to Build Upon its Success of 4G and Fibre](#)

The total number of base stations will increased from the 390 to more than 600 base stations in 2019 around the country. Almost all existing and new base stations are ...

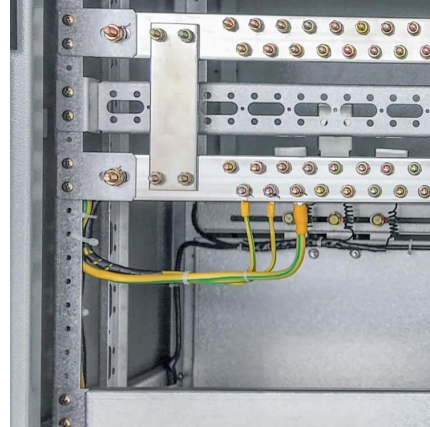
[Get Price](#)



Communication in Fiji

How is the communication system in Fiji? Here, Broadcast media include Fiji TV, a publicly traded company, operates a free-to-air channel; Digicel Fiji operates the Sky Fiji and Sky Pacific multi ...

[Get Price](#)



Fintel

Satellite, LEO Gateway Facilities and Management In addition to being Fiji's only Cable Landing Station, FINTEL has strategically positioned itself as a regional hub by offering colocation ...

[Get Price](#)

Contact Us

For catalog requests, pricing, or partnerships, please visit:
<https://www.germansolar.co.za>

Scan QR Code for More Information



<https://www.germansolar.co.za>