

Voltage of solar combiner box to ground





Overview

What is a solar power combiner box?

A solar power combiner box is a device that combines the output of multiple strings of solar panels for connection to the inverter. This reduces the number of wires that need to go to the inverter. Multiple strings of solar panels are also combined together in parallel to produce higher output currents.

Where should a solar combiner box be located?

The combiner box should reside between the solar modules and inverter. When optimally positioned in the array, it can limit power loss. Position can also be important to price. "Location is highly important because a combiner in a non-optimal location may potentially increase DC BOS costs from losses in voltage and power," Kane explained.

Do you need a combiner box for a solar inverter?

"Solar combiner boxes are engineered to provide overcurrent and overvoltage protection to enhance inverter protection and reliability," he said. "If a project only has two or three strings, like a typical home, a combiner box isn't required. Rather, you'll attach the string directly to an inverter," Sherwood said.

What is recommended for solar combiner boxes between 12 and 48 volts?

According to Northern Arizona Wind & Sun, it's a must to use breakers in place of fuses for solar combiner boxes between 12 and 48 volts.



Voltage of solar combiner box to ground



[Voltage of the combiner box of the photovoltaic power ...](#)

A solar combiner box is unnecessary for projects voltage from 1,000VDC to 1,500VDC holds the promise of a more cost-effective and productive utility-scale plant due to ...

[Get Price](#)

[Solar Combiner Box Installation and Wiring Diagram](#)

A PV combiner box or DC combiner box acts as a central hub, combining the direct current (DC) from multiple strings into a single, organized output safely fed to your ...

[Get Price](#)



[Ground voltage of photovoltaic combiner box](#)

A combiner box is a vital component in any solar power system, acting as a central hub where multiple solar panel strings converge. It's the unsung hero that streamlines your system, ...

[Get Price](#)



[Solar Combiner Boxes and Voltage Changes: What to Know](#)

A solar combiner box joins current from solar panel strings, keeping voltage steady while improving safety and system reliability.

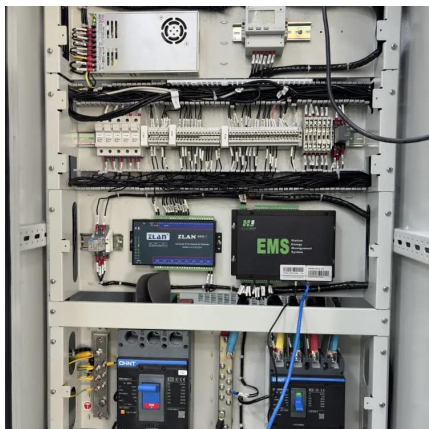
[Get Price](#)



[Seven wiring mistakes in PV combiner boxes and isolators](#)

Keep isolators close to the combiner or entry point to reduce energized runs during service. Label line/load, arc-flash hazard, and maximum operating voltage at the device. ...

[Get Price](#)



[Photovoltaic AC Combiner Box Grounding: The Shockingly ...](#)

Picture this: you've installed 500kW of gleaming solar panels, configured the perfect string layout, and positioned your AC combiner box like a trophy on the wall. But did you remember that ...

[Get Price](#)



[What is the grounding requirement for a PV AC combiner box?](#)

For instance, if you have a large solar power plant with multiple inverters, a PV AC combiner box will collect all the AC power from these inverters and send it to the main ...

[Get Price](#)



[Solar Combiner Box Installation and Wiring...](#)



A PV combiner box or DC combiner box acts as a central hub, combining the direct current (DC) from multiple strings into a single, organized output safely fed to your inverter. Without it, wiring becomes ...

[Get Price](#)



[Wiring from PV panels to combiner box](#)

Overall, a PV combiner box wiring diagram is a valuable tool in the installation and maintenance of a solar energy system. It provides a clear and systematic guide for wiring ...

[Get Price](#)



[600-V Unidirectional Current, Voltage, and Power ...](#)

600-V Unidirectional Current, Voltage, and Power Monitoring for Solar Smart Combiner Box Overview This reference design is a non-isolated high-side current and voltage ...

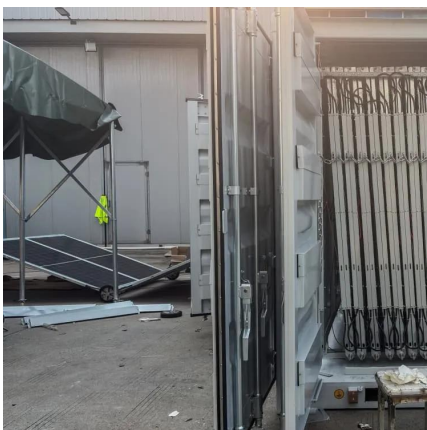
[Get Price](#)



[Seven wiring mistakes in PV combiner boxes ...](#)

Keep isolators close to the combiner or entry point to reduce energized runs during service. Label line/load, arc-flash hazard, and maximum operating voltage at the device. Codes and grid practices ...

[Get Price](#)



[Solar Combiner Box Troubleshooting: 10 Common Problems](#)



...

Conclusion The solar combiner box is an indispensable component of any photovoltaic power generation system, crucial for ensuring efficient, safe, and stable energy ...

[Get Price](#)



Contact Us

For catalog requests, pricing, or partnerships, please visit:
<https://www.germansolar.co.za>

Scan QR Code for More Information



<https://www.germansolar.co.za>