

Update speed of wind-solar complementary chips for solar container communication stations





Overview

What is the complementary coefficient between wind power stations and photovoltaic stations?

Utilizing the clustering outcomes, we computed the complementary coefficient R between the wind speed of wind power stations and the radiation of photovoltaic stations, resulting in the following complementary coefficient matrix (Fig. 17.).

What is the maximum integration capacity of wind and solar power?

At this ratio, the maximum wind-solar integration capacity reaches 3938.63 MW, with a curtailment rate of wind and solar power kept below 3 % and a loss of load probability maintained at 0 %. Furthermore, under varying loss of load probabilities, the total integration capacity of wind and solar power increases significantly.

How to optimize wind and solar energy integration?

The optimization uses a particle swarm algorithm to obtain wind and solar energy integration's optimal ratio and capacity configuration. The results indicate that a wind-solar ratio of around 1.25:1, with wind power installed capacity of 2350 MW and photovoltaic installed capacity of 1898 MW, results in maximum wind and solar installed capacity.

Do wind power and photovoltaic stations complement each other?

Typically, wind power and photovoltaic stations are situated at different locations, necessitating the study and analysis of wind speed-radiation complementarity across various regions. This study focuses on wind power stations and photovoltaic stations in Qinghai and Gansu provinces to explore their complementarity.



Update speed of wind-solar complementary chips for solar containe



[Optimal Design of Wind-Solar complementary power ...](#)

By constructing a complementary power generation system model composed of large-scale hydroelectric power stations, wind farms, and photovoltaic power stations, and ...

[Get Price](#)

The latest requirements for wind and solar complementary ...

How to measure complementarity between wind speed and radiation?The Kendall CC, Spearman CC, and fluctuation coefficient are combined to construct a comprehensive measure of the ...

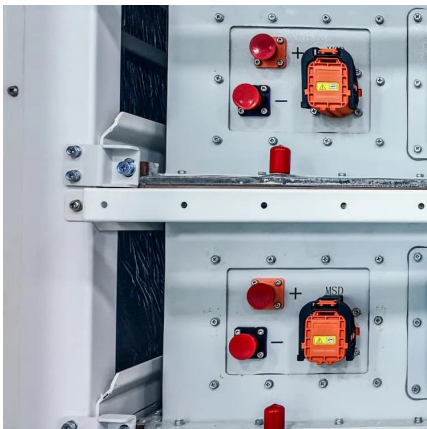
[Get Price](#)



[Integrated Solar-Wind Power Container for Communications](#)

This large-capacity, modular outdoor base station seamlessly integrates photovoltaic, wind power, and energy storage to provide a stable DC48V power supply and optical distribution. Perfect ...

[Get Price](#)



[Design of a Wind-Solar Complementary Power Generation ...](#)

In order to improve the utilization efficiency of wind and photovoltaic energy resources, this paper designs a set of wind and solar complementary power generation ...



[Get Price](#)



An in-depth study of the principles and technologies of wind-solar

Through the analysis of technological innovation and system optimization strategies, this study explores ways to enhance system performance and economy by relying ...

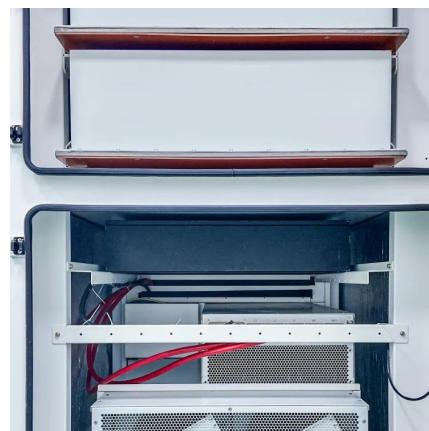
[Get Price](#)



(PDF) Optimization and improvement method for complementary ...

Optimization and improvement method for complementary power generation capacity of wind solar storage in distributed photovoltaic power stations

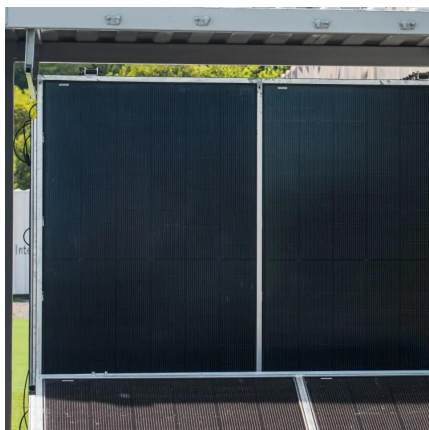
[Get Price](#)



[Wind-solar hybrid for outdoor communication base ...](#)

Integrated Solar-Wind Power Container for Communications This large-capacity, modular outdoor base station seamlessly integrates photovoltaic, wind power, and energy ...

[Get Price](#)





[A copula-based wind-solar complementarity coefficient: ...](#)

A measure of wind-solar complementarity coefficient R is proposed in this paper. Utilizes the copula function to settle the Spearman and Kendall correlation coefficients ...

[Get Price](#)



[Matching Optimization of Wind-Solar Complementary Power ...](#)

The intermittency, randomness and volatility of wind power and photovoltaic power generation bring trouble to power system planning. The capacity configuration of integrated ...

[Get Price](#)



[Operating communication base stations with wind and ...](#)

The wind-solar-diesel hybrid power supply system of the communication base station is composed of a wind turbine, a solar cell module, an integrated controller for hybrid energy

[Get Price](#)



Contact Us

For catalog requests, pricing, or partnerships, please visit:
<https://www.germansolar.co.za>



Scan QR Code for More Information



<https://www.germansolar.co.za>