

Tokyo solar Curtain Wall Project





Overview

What is Tokyo's tallest skyscraper?

The 1,082-foot tower was designed by Pelli Clarke & Partners and inserted among the sea of skyscrapers in Tokyo's Minato ward, the city's largest business district. The tower's large internal floorplates are contained by a glass curtain wall that tapers inward at the base and crown of the building.

What is a PV curtain wall?

The PV curtain wall is the most typical one in the integrated application of PV building. It combines PV power generation technology with curtain wall technology, which uses special resin materials to insert solar cells between glass materials and convert solar energy into electricity through the panels for use by enterprises.

What is a photovoltaic curtain wall?

They enhance thermal comfort and help prevent the greenhouse effect. A standard curtain wall offers no return on investment. In contrast, a photovoltaic curtain wall not only insulates the building but also generates power for over 30 years. This reduces monthly electricity bills and ultimately pays for itself over time.

How did Pelli Clarke & Partners build the Tokyo Tower?

A composite structural system was used for the tower composed of steel tubes filled with concrete. This is typical for large buildings in Tokyo. Additionally, Pelli Clarke & Partners placed four tuned mass dampers near the top of the building as well as a viscous damper within the building's core.



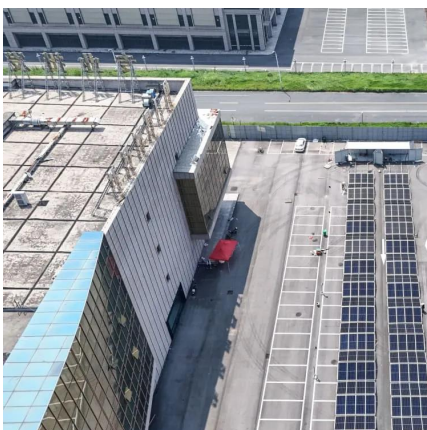
Tokyo solar Curtain Wall Project



PV Curtain Wall System

1. Overview of On-Grid PV Curtain Wall System
The PV curtain wall is the most typical one in the integrated application of PV building. It combines PV power generation technology with curtain wall technology, ...

[Get Price](#)



Curtain Wall House

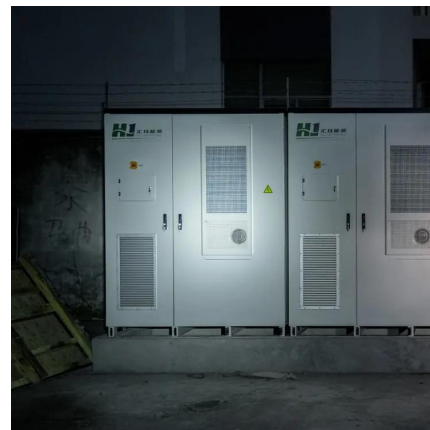
Hanging in front of the third and second floor, the tent-fabric curtains not only control views, privacy, and light but also insulate the building. Like traditional Japanese shoji screens, ...

[Get Price](#)

[What is the principle of solar curtain wall](#)

Incorporating solar curtain walls can thus enhance the overall appeal and longevity of a building, offering both financial and environmental dividends. WHAT ARE THE LIMITATIONS OF SOLAR CURTAIN ...

[Get Price](#)



Curtain Walls

Photovoltaic Curtain WallThe integration of photovoltaic modules in buildings can be carried out in very different ways and gives rise to a wide range of solutions. The facades provide a first view ...

[Get Price](#)



Curtain Walls & Spandrels

Both curtain walls and spandrels from Onyx Solar elevate your building's sustainability and aesthetic appeal, providing customizable options and cutting-edge design. Explore how our advanced glazing technologies ...

[Get Price](#)



Curtain Walls

Photovoltaic Curtain WallThe integration of photovoltaic modules in buildings can be carried out in very different ways and gives rise to a wide range of solutions. The facades provide a first view of the building to the visitor. It ...

[Get Price](#)



'Mode Gakuen' Cocoon Tower

Project Supervisor: Tange Associates
Materials: extrusion; glass; galvanized panel
Standing in Tokyo's distinctive high-rise district of Nishi-Shinjuku, Mode Gakuen Cocoon Tower stands as a symbol of ...

[Get Price](#)



[Tokyo's Tallest Photovoltaic Curtain Wall Manufacturer ...](#)



With 92% of Tokyo's electricity still generated from non-renewable sources (2023 METI report), photovoltaic curtain walls have emerged as game-changers. These building-integrated solar ...

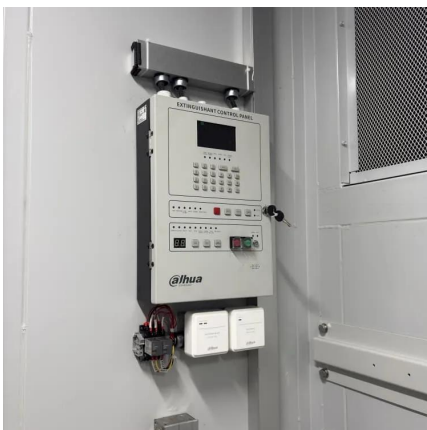
[Get Price](#)



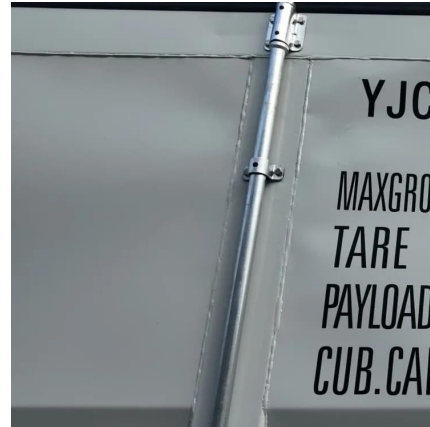
Curtain Wall House

Hanging in front of the third and second floor, the tent-fabric curtains not only control views, privacy, and light but also insulate the building. Like traditional Japanese shoji ...

[Get Price](#)



Pelli Clarke & Partners devises tapering curtain wall



'Mode Gakuen' Cocoon Tower

Project Supervisor: Tange Associates
Materials: extrusion; glass; galvanized panel
Standing in Tokyo's distinctive high-rise district of Nishi-Shinjuku, Mode Gakuen Cocoon ...

[Get Price](#)



What is the principle of solar curtain wall , NenPower

Incorporating solar curtain walls can thus enhance the overall appeal and longevity of a building, offering both financial and environmental dividends. WHAT ARE THE ...

[Get Price](#)



for ...

JP Mori, a 1,082-foot tower designed by Pelli Clarke & Partners is Tokyo's tallest. It features a glass curtain wall and tapered massing.

[Get Price](#)



PV Curtain Wall System

1. Overview of On-Grid PV Curtain Wall System
The PV curtain wall is the most typical one in the integrated application of PV building. It combines PV power generation ...

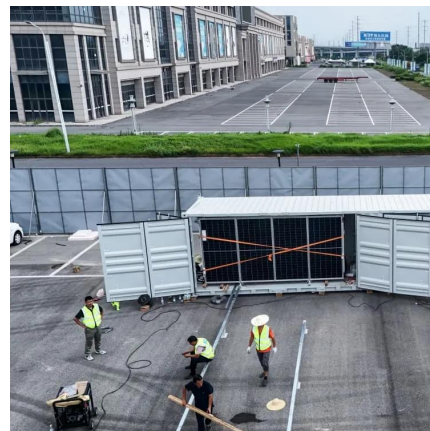
[Get Price](#)



Curtain Walls & Spandrels

Both curtain walls and spandrels from Onyx Solar elevate your building's sustainability and aesthetic appeal, providing customizable options and cutting-edge design. Explore how ...

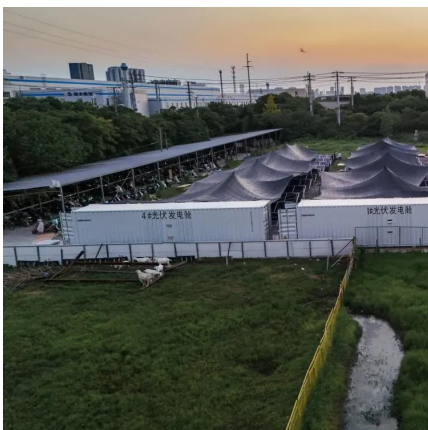
[Get Price](#)



Multi-function partitioned design method for photovoltaic curtain wall

The vacuum integrated photovoltaic (VPV) curtain wall has garnered widespread attention from scholars owing to its remarkable thermal insulation performance and power ...

[Get Price](#)



Pelli Clarke & Partners devises tapering curtain wall



for ...

The 1,082-foot tower was designed by Pelli Clarke & Partners and inserted among the sea of skyscrapers in Tokyo's Minato ward, the city's largest business district. The tower's ...

[Get Price](#)



Contact Us

For catalog requests, pricing, or partnerships, please visit:
<https://www.germansolar.co.za>

Scan QR Code for More Information



<https://www.germansolar.co.za>