

Thimphu Power 5g Base Station 372KWh





Overview

Can 3GPP reduce base station energy consumption in 5G NR BS?

Aiming at minimizing the base station (BS) energy consumption under low and medium load scenarios, the 3GPP recently completed a Release 18 study on energy saving techniques for 5G NR BSs . A broad range of techniques was evaluated in terms of the obtained network energy saving (NES) gain and their impact to the user-perceived throughput (UPT).

What is 3GPP base station model?

The central specification body of cellular networks, the 3GPP, presents a base station model to facilitate energy efficiency improvements for 3GPP Release 18 in . It is based on the user equipment power model of the 3GPP in structure, presentation, and approach.

What is 5G base station?

1. Introduction 5G base station (BS), as an important electrical load, has been growing rapidly in the number and density to cope with the exponential growth of mobile data traffic . It is predicted that by 2025, there will be about 13.1 million BSs in the world, and the BS energy consumption will reach 200 billion kWh .

Does 3GPP have a power consumption model?

In this paper, we present the 3GPP BS power consumption model defined for such evaluation and we provide an overview of promising NES techniques studied by 3GPP. We then proceed to a detailed performance evaluation for a selection of them, focusing on, e.g., the achieved NES gain and the average UPT loss.



Thimphu Power 5g Base Station 372KWh



[Why does 5g base station consume so much ...](#)

The power consumption of the 5G base station mainly comes from the AU module processing and conversion and high power-consuming high radio frequency signals, the extremely high-algorithm and high ...

[Get Price](#)

[Power supply and distribution for Thimphu 5G base station](#)

This 5G base station power supply system integrates battery backup, DC power distribution, and advanced control modules to ensure reliable energy support for critical ...

[Get Price](#)



[Power supply and distribution for Thimphu 5G base station](#)

This 5G base station power supply system integrates battery backup, DC power distribution, and advanced control modules to ensure reliable energy support for critical telecom infrastructure.

[Get Price](#)



[Optimum sizing and configuration of electrical system for](#)

The rising demand for cost effective, sustainable and reliable energy solutions for telecommunication base stations indicates the importance of integr...

[Get Price](#)



Comparison of Power Consumption Models for 5G Cellular Network Base

This paper conducts a literature survey of relevant power consumption models for 5G cellular network base stations and provides a comparison of the models. It highlights ...

[Get Price](#)



Synergetic renewable generation allocation and 5G base station

The growing penetration of 5G base stations (5G BSs) is posing a severe challenge to efficient and sustainable operation of power distribution systems (PDS) due to their huge ...

[Get Price](#)



A Power Consumption Model and Energy Saving Techniques for 5G ...

Aiming at minimizing the base station (BS) energy consumption under low and medium load scenarios, the 3GPP recently completed a Release 18 study on energy saving ...

[Get Price](#)



[Virtual Power Plants: Driving Green Innovation in Telecom](#)



The number of 5G base stations has reached 5.94 million, and the number of 5G users is over 1.87 billion. To deal with the high energy consumption, telecom operators are ...

[Get Price](#)



[Energy consumption optimization of 5G base stations ...](#)

The 5G BS power consumption mainly comes from the active antenna unit (AAU) and the base band unit (BBU), which respectively constitute BS dynamic and static power ...

[Get Price](#)



[Application of AI technology 5G base station](#)

Introduction of energy saving of 5g There are mainly two method of base station energy saving, which are hardware power saving and software energy saving.

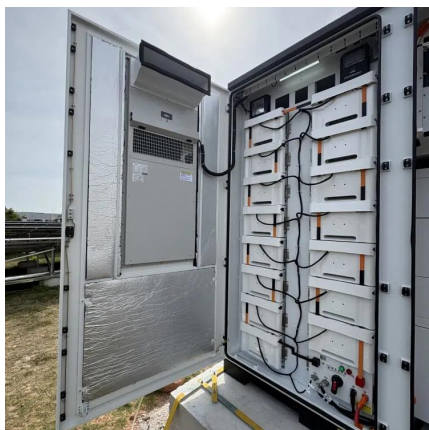
[Get Price](#)



[Why does 5g base station consume so much power and how ...](#)

The power consumption of the 5G base station mainly comes from the AU module processing and conversion and high power-consuming high radio frequency signals, the ...

[Get Price](#)





Contact Us

For catalog requests, pricing, or partnerships, please visit:
<https://www.germansolar.co.za>

Scan QR Code for More Information



<https://www.germansolar.co.za>