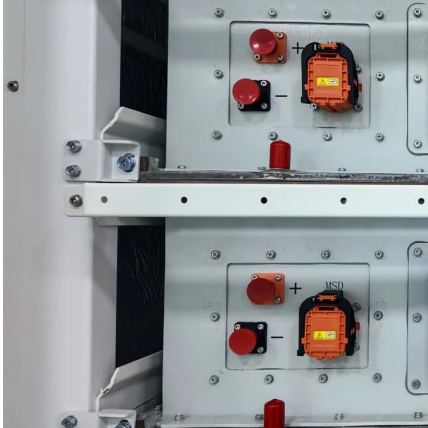


Station and tower in solar container communication station inverter





Station and tower in solar container communication station inverter



[police department vs police station . WordReference Forums](#)

A police department is an organization. A police station is a building, or perhaps part of one. In the given sentence you can use either one, they are both correct, but their meanings ...

[Get Price](#)

[bus station/bus stop . WordReference Forums](#)

A bus "station" is not a bus "terminal"; though a "terminal" is a "station-on-steroids". This is why certain facilities are called bus, train, and or passenger terminals; while other ...

[Get Price](#)



[When should I capitalize "station" in a station name?](#)

The line has four stations, which include Union Station, Bloor GO / Dundas West subway station, Weston GO station and Toronto Pearson International Airport station at ...

[Get Price](#)



next station vs next stop

Hello everyone, While riding the metro in Hamburg, Germany, I recognized that the announcement went "next station, [name of metro station]." I've already heard announcements ...



[Get Price](#)



above one's station.

His ideas were above his station. What does this phrase mean? As I know station also means social position. But I don't quite get the meaning of the sentence.

[Get Price](#)



in/at the station

Hi, I was wondering which preposition is better in the following sentence because I have seen both options: "The train arrives in Waterloo station at 6:30" or "The train arrives at ..."

[Get Price](#)



Vicinity or district?

How much did the house cost? - Somewhere in the region of \$1,000,000. For me, C is the most likely - if what they are asking for is the most likely collocation. Edit: "Quarter" (and ...

[Get Price](#)





"Could you tell me where the train station is?" Is it correct?

In BE you don't need to say train/rail/railway. You can just say station, because railway station is what it means by default. If you mean a different kind of station, you would ...

[Get Price](#)



[railway station or train station? . WordReference Forums](#)

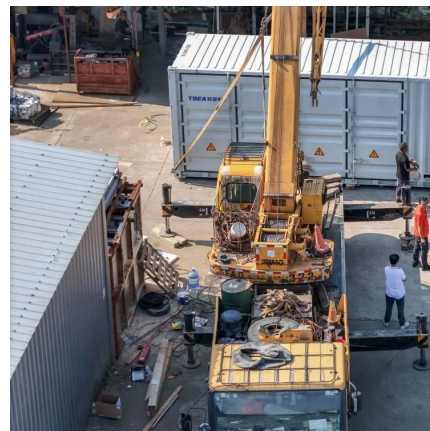
A train station (commonly station, railway station (mainly British Commonwealth) or railroad station (mainly US)) is a railway facility where trains regularly stop to load or unload ...

[Get Price](#)

to get off at the next station

When you did get off, that was the right station under the new circumstances created by missing your intended stop. As soon as you say you missed your stop, every ...

[Get Price](#)



Contact Us

For catalog requests, pricing, or partnerships, please visit:
<https://www.germansolar.co.za>



Scan QR Code for More Information



<https://www.germansolar.co.za>