

Shared Power Base Station





Overview

Shared energy storage (SES) system can provide energy storage capacity leasing services for large-scale PV integrated 5G base stations (BSs), reducing the energy cost of 5G BS and achieving high effi.

What is a 5G base station energy storage device?

During main power failures, the energy storage device provides emergency power for the communication equipment. A set of 5G base station main communication equipment is generally composed of a baseband BBU unit and multiple RF AAU units. Equation 1 serves as the base station load model:.

How much energy does a communication base station use?

In this region, the communication base stations are equipped with energy storage systems with a rated capacity of 48 kWh and a maximum charge/discharge power of 15.84 kW. The self-discharge efficiency is set at 0.99, and the state of charge (SOC) is allowed to range between a maximum of 0.9 and a minimum of 0.1. Figure 3.

What is the largest grid-forming energy storage station in China?

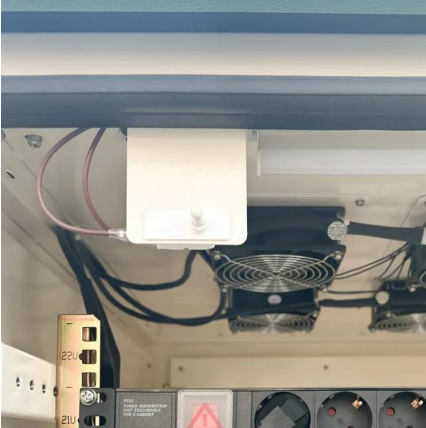
This marks the completion and operation of the largest grid-forming energy storage station in China. The photo shows the energy storage station supporting the Ningdong Composite Photovoltaic Base Project. This energy storage station is one of the first batch of projects supporting the 100 GW large-scale wind and photovoltaic bases nationwide.

Can telecommunication operators afford a shared energy storage system?

However, on the basis of the high energy costs encountered by large-scale 5G BSs, telecommunication operators can hardly afford the additional investment cost of energy storage systems. The shared energy storage (SES) system leverages the nature of the sharing economy to gain benefits by fully utilizing idle energy storage capacity resources.



Shared Power Base Station



[Joint Base Station Selection and Power ...](#)

Cell-free (CF) networks can reduce cell boundaries by densely deploying base stations (BSs) with additional hardware costs and power sources. Integrating a reconfigurable intelligent surface (RIS) into CF ...

[Get Price](#)

[Research on 5G Base Station Shared Power ...](#)

5G base station shared power tower technology involves mounting telecommunications equipment, such as small cells, antennas, and radio units, on existing electricity transmission towers to achieve dual-use ...

[Get Price](#)



[Research on 5G Base Station Shared Power Tower Technology](#)

5G base station shared power tower technology involves mounting telecommunications equipment, such as small cells, antennas, and radio units, on existing electricity transmission ...

[Get Price](#)

5G "shared base station" opened in Nanjing, power sharing base station

The "shared base stations" and "shared substations" opened by the power supply company to operators can save 9.25 billion yuan in overall social investment, which will save a land area ...



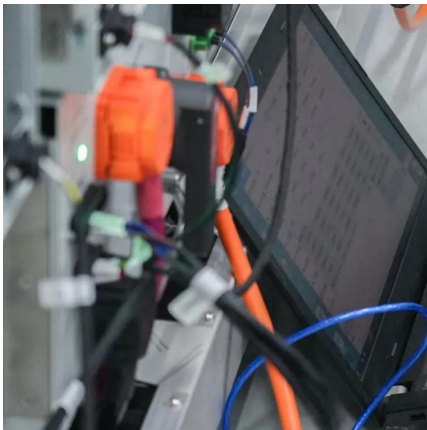
[Get Price](#)



Exploring power system flexibility regulation potential based ...

5G base stations (BSs) are potential flexible resources for power systems due to their dynamic adjustable power consumption. However, the ever-increasing energy ...

[Get Price](#)



[Virtual Power Plants: Driving Green Innovation in Telecom](#)

Base stations are evolving into "power plants!" With the widespread adoption of 5G technology, the number of telecom sites is increasing, leading to higher energy consumption. ...

[Get Price](#)



Optimal capacity planning and operation of shared energy ...

A dynamic capacity leasing model of shared energy storage system is proposed with consideration of the power supply and load demand characteristics of large-scale 5G ...

[Get Price](#)





[Exploring power system flexibility regulation ...](#)

5G base stations (BSs) are potential flexible resources for power systems due to their dynamic adjustable power consumption. However, the ever-increasing energy consumption of 5G BSs places ...

[Get Price](#)



Joint Base Station Selection and Power Allocation Design for ...

Cell-free (CF) networks can reduce cell boundaries by densely deploying base stations (BSs) with additional hardware costs and power sources. Integrating a reconfigurable ...

[Get Price](#)

Coordinated scheduling of 5G base station energy storage ...

Auxiliary equipment includes power supply equipment, monitoring and lighting equipment. The power supply equipment manages the distribution and conversion of electrical ...

[Get Price](#)



[China's Largest Grid-Forming Energy Storage Station...](#)

This marks the completion and operation of the largest grid-forming energy storage station in China. The photo shows the energy storage station supporting the Ningdong ...

[Get Price](#)



[Shared Energy Storage Power Station Facilities: The Game ...](#)

Imagine a shared energy storage power station facility as the ultimate team player in the energy sector - it's the Swiss Army knife that slices through grid instability, renewable waste, and high ...

[Get Price](#)



Electricity allocation algorithm for shared base stations ...

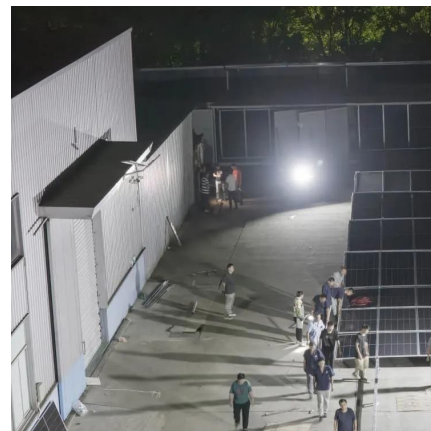
The efficient allocation of electricity has posed a formidable challenge for communication operators. This paper proposes an Electricity Allocation Algorithm (EAA) for ...

[Get Price](#)

[Coordinated scheduling of 5G base station ...](#)

Auxiliary equipment includes power supply equipment, monitoring and lighting equipment. The power supply equipment manages the distribution and conversion of electrical energy among equipment ...

[Get Price](#)



Contact Us

For catalog requests, pricing, or partnerships, please visit:
<https://www.germansolar.co.za>



Scan QR Code for More Information



<https://www.germansolar.co.za>