

# Open battery cabinet distance





## Overview

---

How far should a battery be from a wall?

The distance to the wall for racks and cabinets is 3 100 mm for a better placement of connections and better access for cleaning. Batteries must be assessable easy that service with normal insulated tools can be made (pr EN 50272-2).

What are the requirements for a battery location?

Battery locations shall conform to 480.9 (A), (B), and (C). (A) Ventilation. Provisions appropriate to the battery technology shall be made for sufficient diffusion and ventilation of gases from the battery, if present, to prevent the accumulation of an explosive mixture. (B) Live Parts. Guarding of live parts shall comply with 110.27.

How much space do you need for a battery system?

Spaces about battery systems shall comply with 110.26. Working space shall be measured from the edge of the battery cabinet, racks, or trays. For battery racks, there shall be a minimum clearance of 25 mm (1 in.) between a cell container and any wall or structure on the side not requiring access for maintenance.

How high should a battery room be?

Battery rooms must be dry and have to have a height of 2 m above the operating floors. For vented batteries the floor surface must be electrolyte resistant, some national regulation will require a threshold. This precaution is not necessary for valve regulated batteries.



## Open battery cabinet distance

---



### [Battery Room Safety & Installation Guide](#)

The distance to the wall for racks and cabinets is  $\geq 100$  mm for a better placement of connections and better access for cleaning. Batteries must be assessable easy that service with normal ...

### [Get Price](#)

### [Best Practices and Considerations for Siting Battery ...](#)

Best Practices and Considerations for Siting Battery Storage Systems Will the battery storage system be sited indoors or outdoors? o Depending on the size of the battery ...

### [Get Price](#)



### **EG4 BESS Spacing**

The minimum horizontal spacing requirement is 30 cm (12 inches) between two EG4-LL, EG4-LL-S and/or LifePower4 6 slot battery cabinet pairs as shown in Figure 2.

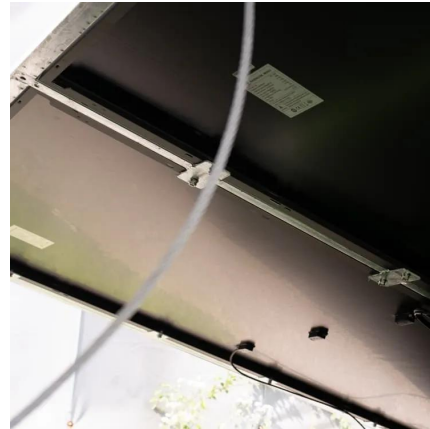
### [Get Price](#)

### **What is the appropriate storage spacing for energy storage cabinets**

Efficient management of energy storage systems requires periodic checks for performance metrics, battery levels, and general condition assessments. Appropriate spacing ...



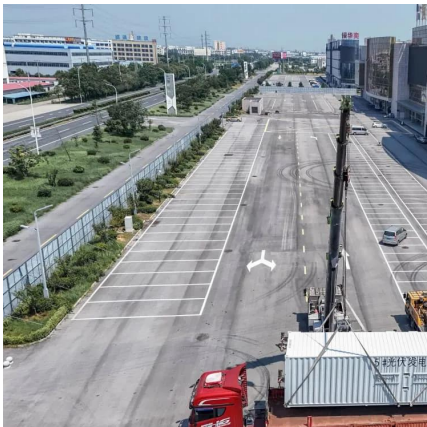
[Get Price](#)



[Checklist: Venting Clearance and Code Rules ...](#)

Stop battery overheating. This checklist details essential venting clearance and code rules for safe, compliant battery cabinet installation.

[Get Price](#)



#### 480.9 Battery Locations.

2014 Code Language including the Errata: 480.9 Battery Locations. Battery locations shall conform to 480.9 (A), (B), and (C). (A) Ventilation. Provisions appropriate to the battery technology shall be made for sufficient diffusion ...

[Get Price](#)



[BatteryRoomVentilationInstallation.PDF](#)

Battery Rooms Spark generating parts must have a distance to cell/block openings (respectively valves) of at least 0.5 m. This is valid for vented and valve regulated cells/blocks.

[Get Price](#)



[What is the appropriate storage spacing for...](#)





Efficient management of energy storage systems requires periodic checks for performance metrics, battery levels, and general condition assessments. Appropriate spacing allows personnel to move freely ...

[Get Price](#)



[Battery Cabinet Dimensions Guide , Huijue Group E-Site](#)

Tomorrow's Battery Cabinets: Shape-Shifting Reality Emerging phase-change materials now enable adaptive cabinet walls that expand/contract based on cell count. Tesla's ...

[Get Price](#)



#### **Why Safe Distance of Energy Storage Battery Containers Isn't ...**

The Social Distancing of Energy Infrastructure Remember 2020's "6 feet apart" rule? Battery containers need their personal space too. The safe distance of energy storage ...

[Get Price](#)



#### **Checklist: Venting Clearance and Code Rules for Battery Cabinets**

Stop battery overheating. This checklist details essential venting clearance and code rules for safe, compliant battery cabinet installation.

[Get Price](#)



[Battery Room Safety & Installation Guide](#)



The distance to the wall for racks and cabinets is  $\geq 100$  mm for a better placement of connections and better access for cleaning. Batteries must be assessable easy that service with normal insulated tools can be made (pr ...

[Get Price](#)



#### 480.9 Battery Locations.

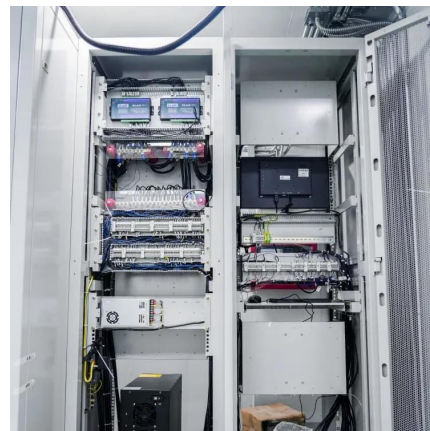
2014 Code Language including the Errata: 480.9 Battery Locations. Battery locations shall conform to 480.9 (A), (B), and (C). (A) Ventilation. Provisions appropriate to the battery ...

[Get Price](#)

#### Installation Environment and Clearance Requirements

Installation Clearance Requirements Reserve the following clearances around the cabinet to facilitate operations and ventilation: Reserve a clearance of at least 950 mm from the front of ...

[Get Price](#)



## Contact Us

For catalog requests, pricing, or partnerships, please visit:  
<https://www.germansolar.co.za>



## Scan QR Code for More Information



<https://www.germansolar.co.za>