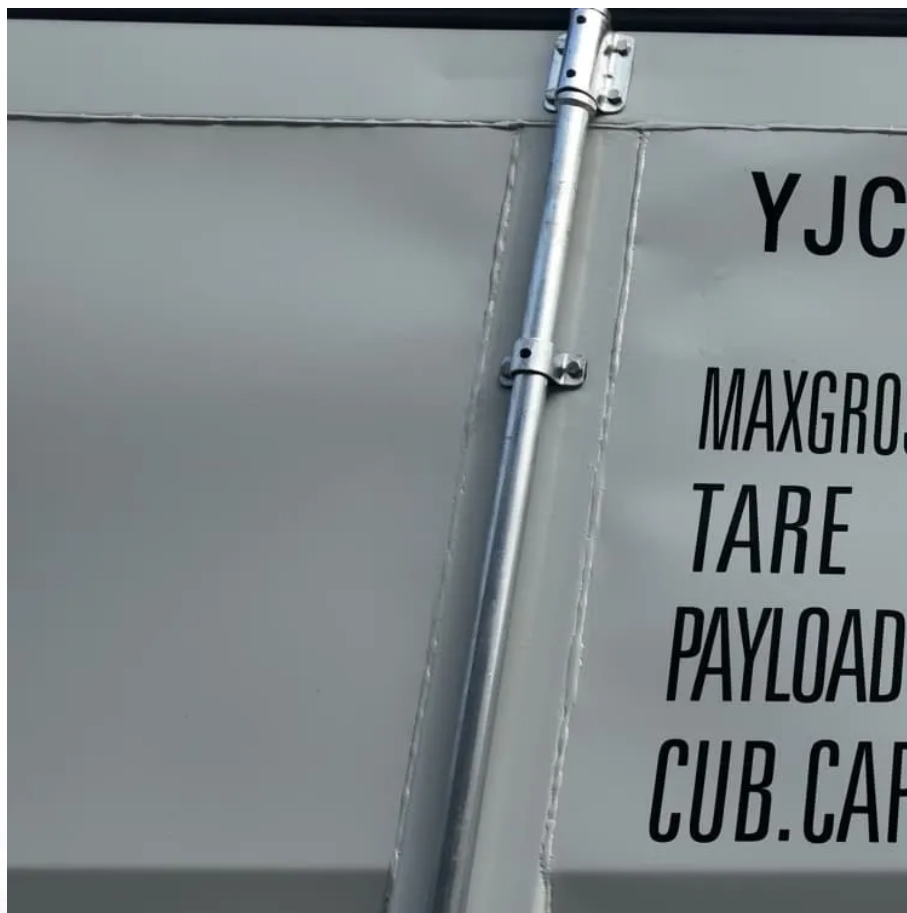


# How to ground an outdoor base station





## Overview

---

How do I design a grounding system for a high-powered station?

When designing a grounding system for a high-powered station, there are several technical factors to consider: Grounding Resistance: The resistance between your grounding system and the earth should be as low as possible, typically under 10 ohms, but ideally below 5 ohms for optimal safety.

What is a base station antenna?

Base station antennas are fixed installations for receiving radio signals, and are usually on tall structures placed at a great height over the ground. This makes them easy targets for lightning strikes, as they're usually high structures made of a conductor.

What is a high-powered radio station grounding system?

A typical high-powered amateur radio station grounding system includes the following components: Grounding Rods: These are typically made of copper or copper-clad steel and are driven into the ground to provide a low-resistance path to earth. A common practice is to use multiple ground rods placed several feet apart.

Why do radio stations need to be grounded?

A properly grounded system minimizes this interference, ensuring cleaner transmission and reception. Safety from Electrocution: Grounding ensures that if any part of your radio station's equipment becomes electrically charged, the energy will flow into the ground, minimizing the risk of electric shock.



## How to ground an outdoor base station

---



### [How to Ground a CB Base Station Antenna](#)

Base station antennas are fixed installations for receiving radio signals, and are usually on tall structures placed at a great height over the ground. This makes them easy ...

[Get Price](#)

### [How to Ground a CB Base Station Antenna](#)

Base station antennas are fixed installations for receiving radio signals, and are usually on tall structures placed at a great height over the ground. This makes them easy targets for lightning ...

[Get Price](#)



### **Station / Antenna Grounding**

I've been researching on what's the best way to set up my base station at home in regards to grounding. My main concern is antenna grounding and if it's even necessary since I ...

[Get Price](#)



### [Proper Base Station & Mobile Grounding](#)

Ensure optimal performance and safety of your base station with proper grounding techniques. Learn how to prevent shocks and RFI problems.

[Get Price](#)



#### [Best Practices for Outdoor Grounding & Bonding ...](#)

Best Practices for Outdoor Grounding & Bonding Terminations Connector Technology Electrical Connector o In their simplest form, join two or more conductors in a ...

[Get Price](#)



#### **Best Practices for Installing Outdoor Wireless Access Points ...**

This video outlines the various grounding-related practices while installing outdoor wireless access points.

[Get Price](#)



#### [The Essential Guide to Grounding Systems for ...](#)

A typical high-powered amateur radio station grounding system includes the following components: Grounding Rods: These are typically made of copper or copper-clad steel and are driven into the ...

[Get Price](#)



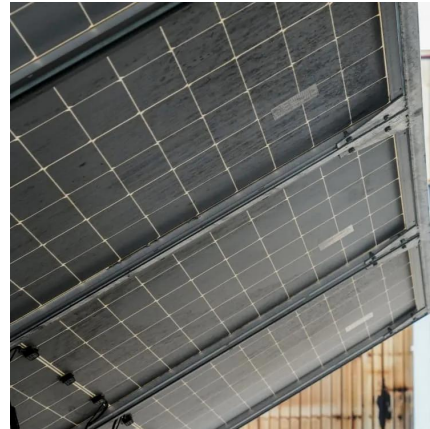
#### **The Essential Guide to Grounding Systems for High-**



### Powered ...

A typical high-powered amateur radio station grounding system includes the following components: Grounding Rods: These are typically made of copper or copper-clad ...

[Get Price](#)



### Grounding Your Station

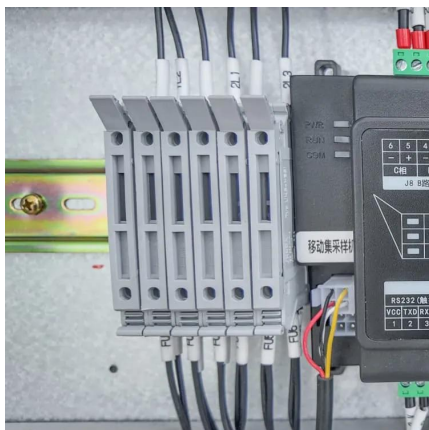
The Ground (earth) appears as a series resistance in the antenna equivalent circuit. Therefore, without radials, ground mounted vertical antennas are not much more than dummy ...

[Get Price](#)

### How to Ground a CB Base Station Antenna

Base station antennas are fixed installations for receiving radio signals, and are usually on tall structures placed at a great height over the ground. This makes them easy targets for lightning strikes, as they're usually high ...

[Get Price](#)



### CBWI August 1996 Proper Base Station & Mobile Grounding

In setting up a base station it's recommended that you place a 8' ground rod into the ground directly below the antenna. Run a #8 solid copper ground wire from the U-Clamp ...

[Get Price](#)



## Contact Us

---

For catalog requests, pricing, or partnerships, please visit:  
<https://www.germansolar.co.za>

## Scan QR Code for More Information



<https://www.germansolar.co.za>