

How many kilowatt-hours of electricity can a 380-watt solar panel store





Overview

How much energy does a solar panel produce a day?

On average, a solar panel can output about 400 watts of power under direct sunlight, and produce about 2 kilowatt-hours (kWh) of energy per day. Most homes install around 18 solar panels, producing an average of 36 kWh of solar energy daily. That's enough to cover most, if not all, of a typical home's energy consumption.

How much energy does a 300 watt solar panel produce?

A 300-watt solar panel will produce anywhere from 0.90 to 1.35 kWh per day (at 4-6 peak sun hours locations). A 400-watt solar panel will produce anywhere from 1.20 to 1.80 kWh per day (at 4-6 peak sun hours locations). The biggest 700-watt solar panel will produce anywhere from 2.10 to 3.15 kWh per day (at 4-6 peak sun hours locations).

How much energy does a 400 watt solar panel produce?

A 400-watt solar panel will produce anywhere from 1.20 to 1.80 kWh per day (at 4-6 peak sun hours locations). The biggest 700-watt solar panel will produce anywhere from 2.10 to 3.15 kWh per day (at 4-6 peak sun hours locations). Let's have a look at solar systems as well:.

How much electricity can a 200 watt solar panel produce?

Here, your 200-watt solar panel could theoretically produce an average of 1,000 watt-hours (1 kilowatt-hour) of usable electricity daily. In this same location, though, a larger-wattage solar panel would be able to produce more electricity each day with the same amount of sunlight.



How many kilowatt-hours of electricity can a 380-watt solar panel s



[How Many kWh Does A Solar Panel Produce Per Day?](#)

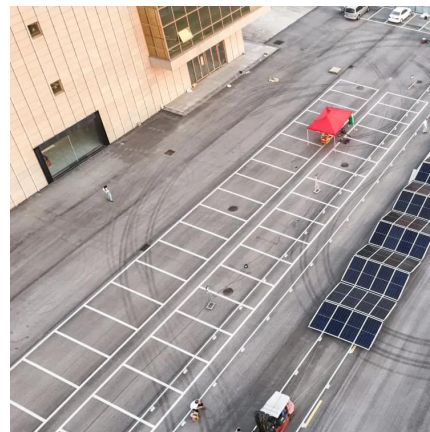
Quick Example: Let's say you want to know how many kWh does a 300-watt solar panel produce per day. You live in Texas, and you can use the average yearly 4.92 peak sun ...

[Get Price](#)

[The Complete Off Grid Solar System Sizing ...](#)

Step 1: Determine your Daily Energy Consumption The primary factor determining your off-grid system size is your Daily Energy Consumption, measured in Watt-hours (Wh) or kilowatt-hours (kWh). 1 ...

[Get Price](#)



[How to Calculate Daily kWh from Your Solar ...](#)

Calculate how many kWh a solar panel produces daily with our easy formula + chart. Learn how panel size and peak sun hours impact energy output in your state.

[Get Price](#)



[How Many kWh Does A Solar Panel Produce Per Day?](#)

The amount of energy generated by any solar panel depends heavily on the irradiance for the panel's location measured in kilowatt-hours per square meter per day ...

[Get Price](#)



[How many kWh does a solar panel produce?](#)

The kWh a solar panel produces depends on two main factors: its wattage and sunlight intensity. Learn how to calculate a daily energy estimate.

[Get Price](#)



[How Much Energy Does A Solar Panel...](#)

On average, a solar panel can output about 400 watts of power under direct sunlight, and produce about 2 kilowatt-hours (kWh) of energy per day. Most homes install around 18 solar panels, producing an average of 36 kWh of ...

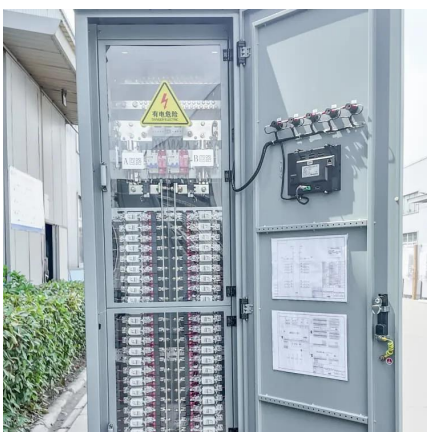
[Get Price](#)



How many kilowatt-hours of electricity can a 380-watt solar panel store

How many kWh does a 100 watt solar panel produce? Using our calculator, you can find that a 100-watt solar panel produces 0.43 kWh per day when installed in a location with 5.79 peak ...

[Get Price](#)



[The Complete Off Grid Solar System Sizing Calculator](#)



Step 1: Determine your Daily Energy Consumption The primary factor determining your off-grid system size is your Daily Energy Consumption, measured in Watt-hours (Wh) or ...

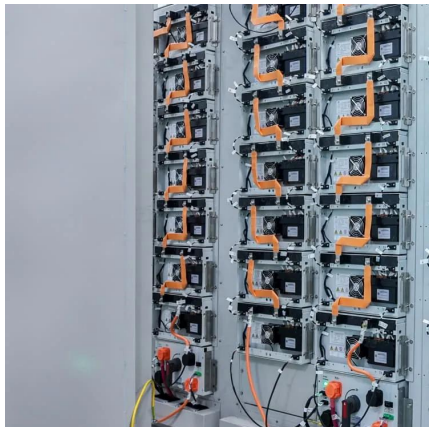
[Get Price](#)



[How many kWh does a solar panel produce?](#)

The kWh a solar panel produces depends on two main factors: its wattage and sunlight intensity. Learn how to calculate a daily energy estimate.

[Get Price](#)



[380 Watt Solar Panels: Complete 2025 Guide To Specs](#)

A 380 watt solar panel represents a powerful mid-range option for both residential and commercial solar installations, offering an excellent balance of efficiency, cost ...

[Get Price](#)



How to Calculate Daily kWh from Your Solar Panels - EcoVault

Calculate how many kWh a solar panel produces daily with our easy formula + chart. Learn how panel size and peak sun hours impact energy output in your state.

[Get Price](#)



[How Many kWh Does A Solar Panel Produce ...](#)



The amount of energy generated by any solar panel depends heavily on the irradiance for the panel's location measured in kilowatt-hours per square meter per day (kWh/m²/day). For convenience, it's also known ...

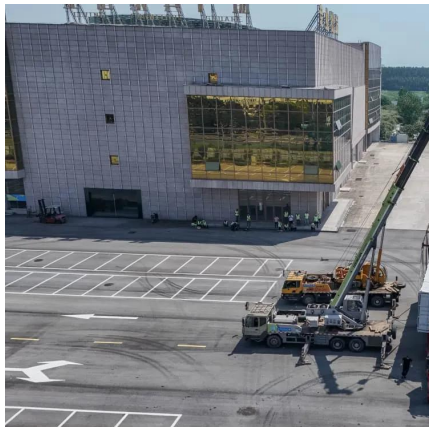
[Get Price](#)



[What can 380w solar energy do? , NenPower](#)

The capacity to produce 380 watts suggests that this unit can generate an average of around 1.5 kilowatt-hours (kWh) of electricity daily under optimal conditions.

[Get Price](#)



[How Much Energy Does A Solar Panel Produce?](#)

On average, a solar panel can output about 400 watts of power under direct sunlight, and produce about 2 kilowatt-hours (kWh) of energy per day. Most homes install around 18 solar panels, ...

[Get Price](#)



[How Much Energy Does A Solar Panel ...](#)

A 400-watt panel can generate roughly 1.6-2.5 kWh of energy per day, depending on local sunlight. To cover the average U.S. household's 900 kWh/month consumption, you typically need 12-18 panels.

[Get Price](#)



[How Much Energy Does A Solar Panel Produce?](#)



A 400-watt panel can generate roughly 1.6-2.5 kWh of energy per day, depending on local sunlight. To cover the average U.S. household's 900 kWh/month consumption, you ...

[Get Price](#)



Contact Us

For catalog requests, pricing, or partnerships, please visit:
<https://www.germansolar.co.za>

Scan QR Code for More Information



<https://www.germansolar.co.za>