

Ground auxiliary base station emergency communication





Overview

The reconstruction of the communication network is a precondition for the smooth implementation of rescue and disaster recovery after geological disasters. Although traditional post-disaster emer.

What is integrated satellite-ground emergency constructed-network technology solution after disaster (ISG-ECN)?

In this article, we propose an integrated satellite-ground emergency constructed-network technology solution after disaster (ISG-ECN). The emergency communication network mainly includes two parts: ground Mesh network () and satellite portable station.

How does a geological disaster affect the emergency communication network?

Particularly when a major geological disaster occurs, it will do harm to the existing mobile communication network, present additional difficulties to rescue work, and have a significant impact on the rescue work for the speed of reconstruction of the emergency communication network after the disaster ().

What is emergency communication network?

The emergency communication network mainly includes two parts: ground Mesh network () and satellite portable station. Among them, the ground Mesh network is used to construct a local area network () covering the geological disaster site, and the satellite portable station is used to connect the local area network to the external public network.

Why do we need a post-disaster emergency communication network reconstruction system?

Because 72 h after the disaster is particularly important time period for rescue work (), it is necessary to design and develop a portable, easy to build, and stable post-disaster emergency communication network reconstruction system.



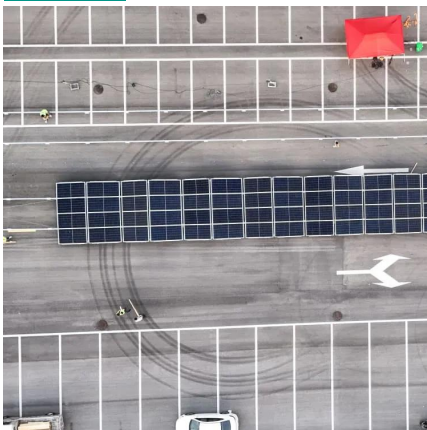
Ground auxiliary base station emergency communication



Integrated Emergency Communication for Sky, Air, and Ground ...

Explore Belfone's integrated emergency communication solutions that connect sky, air, and ground forces. Ensure seamless, reliable coordination during critical missions and disaster ...

[Get Price](#)



[Integrated satellite-ground post-disaster emergency ...](#)

Peng et al. (2018) proposed an emergency communication solution in which UAVs are deployed in the area with uneven distribution of user equipment, and using UAVs as air ...

BTS base station on sales

5. Lightning protection grounding system Mobile communication base stations are generally built on high buildings or hillsides, especially antennas are installed on higher towers. The towers and base station are easy to ...

[Get Price](#)



Energy-Efficient Networking for Emergency Communications with Air Base

With the development of 5G technology, a convenient and fast emergency communication solution is needed when the local ground base station is unavailable for ...

[Get Price](#)



[An Independent UAV-Based Mobile Base Station](#)

In disaster scenarios, e.g., earthquakes, tsunamis, and wildfires, communication infrastructure often becomes severely damaged. To rapidly restore damaged communication ...

[Get Price](#)



[Transportable base station for emergency communications](#)

Access to reliable communications services is a key factor in any emergency situation. ASTRI has succeeded in producing a mobile base station that allows for cost ...

[Get Price](#)



Integrated satellite-ground post-disaster emergency communication

The reconstruction of the communication network is a precondition for the smooth implementation of rescue and disaster recovery after geological disasters. Although traditional ...

[Get Price](#)





Airborne Base Stations Bring Back Connectivity

ZTE has developed airborne base stations mounted on uncrewed aerial vehicles to rapidly restore connectivity during natural disasters. These stations can support both private emergency ...

[Get Price](#)



Base stations placement optimization in wireless networks for emergency

Disaster relief operations rely on the rapid deployment of wireless network architectures to provide emergency communications. Future emergency networks will consist ...

[Get Price](#)

An Independent UAV-Based Mobile Base

...

In disaster scenarios, e.g., earthquakes, tsunamis, and wildfires, communication infrastructure often becomes severely damaged. To rapidly restore damaged communication systems, we propose a UAV ...

[Get Price](#)



BTS base station on sales

5. Lightning protection grounding system Mobile communication base stations are generally built on high buildings or hillsides, especially antennas are installed on higher towers. The towers ...

[Get Price](#)



Research on the space-air-ground integrated emergency communication

This paper proposes and studies a Space-Air-Ground Integrated Emergency Communication Auxiliary System. By introducing Beidou Satellite (BDS) transceivers and internetwork ...

[Get Price](#)



Contact Us

For catalog requests, pricing, or partnerships, please visit:
<https://www.germansolar.co.za>

Scan QR Code for More Information



<https://www.germansolar.co.za>