

Does wind-solar complementarity for solar container communication stations require planning





Overview

Can a multi-energy complementary power generation system integrate wind and solar energy?

Simulation results validated using real-world data from the southwest region of China. Future research will focus on stochastic modeling and incorporating energy storage systems. This paper proposes constructing a multi-energy complementary power generation system integrating hydropower, wind, and solar energy.

Do wind and solar power complement each other well?

It is clear that regardless of the wind and solar curtailment rate, the optimal installed capacity ratio is close to 1:1. This indicates that wind power and solar power complement each other well based on typical daily output data selected from the entire year, thereby demonstrating the necessity of simultaneous development of wind and solar power.

Are multi-energy complementary systems effective in ensuring power supply to the grid?

This validates the effectiveness of multi-energy complementary systems in ensuring power supply to the grid. Additionally, it can be deduced that the ratio of maximum integrable wind and solar capacity to hydropower capacity increases with the increase in hydropower capacity.

What are the complementary characteristics of wind and solar energy?

The complementary characteristics of wind and solar energy can be fully utilized, which better aligns with fluctuations in user loads, promoting the integration of wind and solar resources and ensuring the safe and stable operation of the system.

1. Introduction



Does wind-solar complementarity for solar container communication



[Globally interconnected solar-wind system ...](#)

A globally interconnected solar-wind power system can meet future electricity demand while lowering costs, enhancing resilience, and supporting a stable, sustainable transition to net-zero emissions.

[Get Price](#)

[Design and application of wind-solar hybrid power supply](#)

The wind-solar hybrid power system is a high performance-to-price ratio power supply system by using wind and solar energy complementarity. The environment resources of ...

[Get Price](#)



Globally interconnected solar-wind system addresses future ...

A globally interconnected solar-wind power system can meet future electricity demand while lowering costs, enhancing resilience, and supporting a stable, sustainable ...

[Get Price](#)



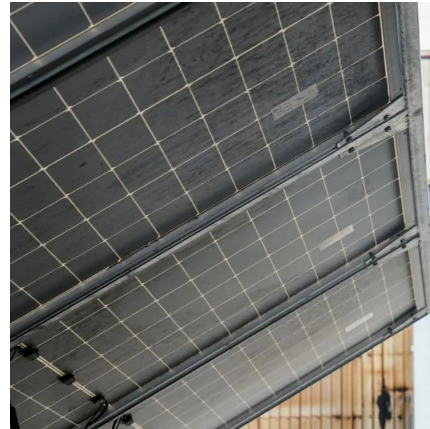
The role of wind and solar complementarity in communication base stations

A review on the complementarity between grid-connected solar o The paper proposes an ideal complementarity analysis of wind and solar



sources. o Combined wind and solar generation ...

[Get Price](#)



[Assessing the potential and complementary](#)

By calculating the Kendall rank correlation coefficient between wind and solar energy in China, the study mapped the spatial distribution of wind-solar energy ...

[Get Price](#)



[Optimal Design of Wind-Solar complementary power ...](#)

The outer layer aims to maximize the accessible scale of wind and solar energy, while the inner layer considers the matching degree between power output and grid load. The ...

[Get Price](#)



[How to integrate wind and solar complementarity in ...](#)

A wind-solar hybrid and power station technology, applied in the field of communication, can solve problems such as the difficulty of power supply for communication ...

[Get Price](#)





[Matching Optimization of Wind-Solar Complementary Power ...](#)

The intermittency, randomness and volatility of wind power and photovoltaic power generation bring trouble to power system planning. The capacity configuration of integrated ...

[Get Price](#)



[Communication base station wind and solar ...](#)

Communication base station wind and solar complementary project A copula-based wind-solar complementarity coefficient: Mar 1, 2025 · In this paper, a wind-solar energy ...

[Get Price](#)

[Wind-solar hybrid for outdoor communication base ...](#)

Integrated Solar-Wind Power Container for Communications This large-capacity, modular outdoor base station seamlessly integrates photovoltaic, wind power, and energy ...

[Get Price](#)



[Construction of wind and solar complementary ...](#)

The successful grid connection of a 54-MW/100-kWp wind-solar complementary power plant in NanâEUR(TM)ao, Guangdong Province, in 2004 was the first windâEUR"solar ...

[Get Price](#)



Contact Us

For catalog requests, pricing, or partnerships, please visit:
<https://www.germansolar.co.za>

Scan QR Code for More Information



<https://www.germansolar.co.za>