

Can the inverter be plugged into a 220 volt power supply





Overview

What is a 220V power inverter?

A 220 volt power inverter converts direct current to conventional alternating current. It can be used to run electronic equipment when there is no normal power supply. Sam Stores stocks a wide range of power inverters to match your needs.

What is a 12V DC to 220V AC inverter?

Inverters (sometimes called power inverters) are just a class of electronic devices called power electronics that convert direct current into alternating current. Scientifically speaking, the transformer in an inverter must have a 1:19 turn ratio in order to convert 12V DC to 220V AC.

Can a 12 volt inverter run 240 volt appliances?

By converting 12 volt DC power to 240 volt AC power, inverters can run most 240 volt electronic appliances without a power source and save you having to buy expensive 12 volt appliances when camping or caravanning.

Can a 12V battery run a 220V AC?

The result is that the 12V DC input becomes 220V AC output. PowMr Store's inverter converts DC power from a 12V battery system to AC power, which can power your home electrical equipment properly and can run a variety of 220V appliances such as refrigerators, air conditioners, and televisions, etc.



Can the inverter be plugged into a 220 volt power supply



[Can You Plug A 230V Appliance Into A 220V ...](#)

If you're moving or traveling to a country with a different voltage than what your appliance is designed for, you might be wondering if you can just plug it in and go. Here's if You Can Plug a 230V Appliance ...

[Get Price](#)

[12vdc To 220vac 500w Inverter Circuit Diagram](#)

One such example is the 12vdc to 220vac 500w Inverter Circuit Diagram, which can be used to convert a 12-volt DC power source into a 220-volt AC power source. This ...

[Get Price](#)



Best 220 Volt Power Inverters for Cars, Homes, and Solar ...

Choosing the right 220 volt power inverter can make a big difference when powering your electronics on the go or at home. Whether you need an inverter for your car, ...

[Get Price](#)



[12v to 220v Home Power Inverter Introduction](#)

The home power inverter directly take 12V DC power supply from a DC power source (such as: storage batteries, etc.), with a special clamp connected to the inverter into AC 220V, to supply ...



[Get Price](#)



[How to Link Two Inverters Together to Get 220V AC](#)

Most power inverters are designed to convert 12-volt, 24-volt, or 48-volt DC to 120-volt AC. These inverters are commonly used in recreation vehicles and solar power systems. ...

[Get Price](#)



Buyer's Guide for 220 Volt Inverters , 220 Volt Appliances , 240 Volt

Buyer's Guide for 220 Volt Inverters Question1: What is a 220 volt power inverter? Answer 1: A 220 volt power inverter is a device that converts low-voltage DC (direct current) power to ...

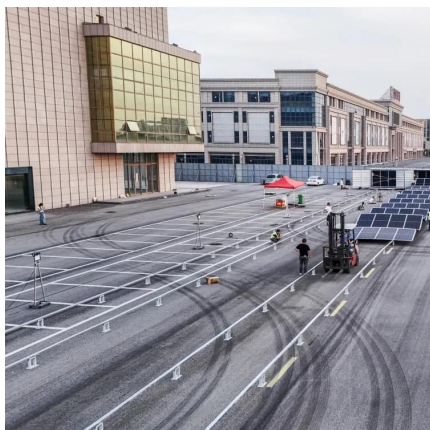
[Get Price](#)



[220-volt Inverter - Compatible with All Electronic Devices](#)

A 220-volt inverter can change the electric current of electronic devices to be able to work on 110 power outlets. The best types of inverters usually have one universal outlet.

[Get Price](#)





[How does a 12V to 220V Inverter Work?](#)

A converter is an electrical device that converts the supply voltage from AC to DC. Simply put, an RV inverter converts DC to AC power and an RV converter converts AC to DC ...

[Get Price](#)



[Why Use High Quality 220 Volt Inverter](#)

The output frequency and voltage, overall power handling and input voltage depend on the design of the circuitry or the device. A 220 volt inverter can be plugged directly into a ...

[Get Price](#)



220 Volt Inverter: The Ultimate Guide to Choosing the Right ...

The Ultimate Guide to 220 Volt Inverters In today's world, reliable power sources are essential for both home and outdoor activities. One solution that has gained popularity is ...

[Get Price](#)



[Can You Plug A 230V Appliance Into A 220V Outlet?](#)

If you're moving or traveling to a country with a different voltage than what your appliance is designed for, you might be wondering if you can just plug it in and go. Here's if ...

[Get Price](#)





[12v to 220v Home Power Inverter Introduction](#)

The home power inverter directly take 12V DC power supply from a DC power source (such as: storage batteries, etc.), with a special clamp connected to the inverter into AC 220V, to supply electrical products.

[Get Price](#)



Contact Us

For catalog requests, pricing, or partnerships, please visit:
<https://www.germansolar.co.za>

Scan QR Code for More Information



<https://www.germansolar.co.za>