

# Can four 20V batteries connected in parallel with a 12V inverter be used





## Overview

---

Can a 12V battery be used in parallel?

It goes without saying (but we'll say it anyway) that you must not mix voltages or chemistries of batteries. If you run a 12v system, only use 12v batteries. The terminal voltage of each battery should also be almost identical when putting in parallel. A difference of 0.1v is ok in most circumstances.

Should you connect a battery to an inverter in parallel?

Many people prefer to connect batteries and inverters in parallel. This is because there is less limitation on how many batteries you can connect to your inverter at once. The other thing to consider is your battery charger. The bigger your battery capacity and overall amperage, the more powerful your battery charger needs to be.

Can a 12V inverter be connected to a 24v battery?

Let's say you have a 12V inverter and try to connect two 12V batteries in series. You would end up inputting 24V to the inverter and cause an overload. This could cause damage to your equipment, at the very least your inverter will shut down to protect itself.

How many batteries can I connect to my inverter?

There is no set limit to how many batteries you can connect to your inverter. But you must understand how you connect your batteries together affects what you can and can't do! For example, connecting your batteries in series will be different to connecting in parallel.



## Can four 20V batteries connected in parallel with a 12V inverter be



### [How to Wire Solar Panel & Batteries in Parallel](#)

Parallel Connection of Solar Panels and Batteries with Automatic UPS System - 12V Installation The 12V system is the most common solar panel wiring configuration used with ...

[Get Price](#)

### [Can I connect multiple batteries to an ...](#)

Backup Power Systems For businesses or homes that need a reliable backup power source, connecting multiple batteries to an inverter can ensure that you have enough power during a power outage. You can ...

[Get Price](#)



### [How Many Batteries Can Be Connected to a ...](#)

When it comes to connecting batteries to a 12V inverter, the number of batteries that can be connected depends on the inverter's capacity and the total voltage required for the intended application. In general, a ...

[Get Price](#)



### **Wiring Batteries in Parallel: Understanding the Dangers and ...**

Wiring batteries in parallel is a common practice to increase capacity and extend the runtime of battery-powered systems, such as in solar systems and off-grid applications. ...





[Get Price](#)



**My 2000W inverter requires 12V; do I connect my batteries in parallel?**

So wiring the batteries together is my main concern. I've read that it's not recommended to wire batteries in parallel, and yet (I think!) I'd need to keep the batteries in ...

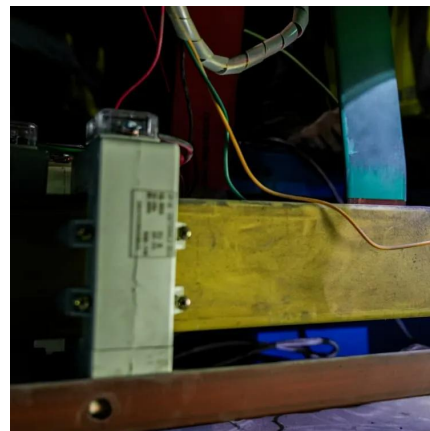
[Get Price](#)



[Guide to Connecting Batteries in Parallel....](#)

Learn the safety rules, and wiring tips for connecting batteries in parallel to expand capacity, balance load, and extend energy storage efficiently.

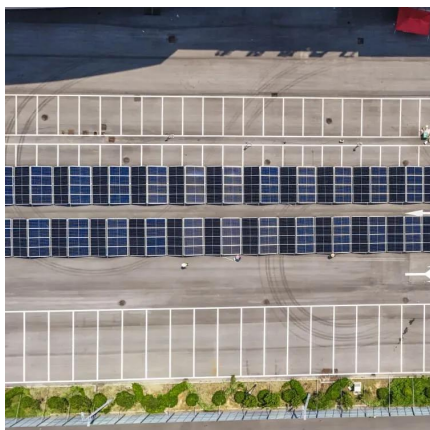
[Get Price](#)



[How Many Batteries Can Be Connected to a 12V Inverter?](#)

When it comes to connecting batteries to a 12V inverter, the number of batteries that can be connected depends on the inverter's capacity and the total voltage required for the ...

[Get Price](#)



[Wiring Batteries in Parallel: Understanding....](#)



Wiring batteries in parallel is a common practice to increase capacity and extend the runtime of battery-powered systems, such as in solar systems and off-grid applications. However, this setup comes with certain ...

[Get Price](#)



[My 2000W inverter requires 12V: do I connect ...](#)

So wiring the batteries together is my main concern. I've read that it's not recommended to wire batteries in parallel, and yet (I think!) I'd need to keep the batteries in parallel to avoid upping the voltage and ...

[Get Price](#)



[Connecting Multiple Batteries to an Inverter: Easy Guide](#)

Need more battery capacity on your inverter? Let's look at how to add more batteries and how many batteries you can connect to an inverter.

[Get Price](#)



[How to Wire Solar Panel & Batteries in ...](#)

Parallel Connection of Solar Panels and Batteries with Automatic UPS System - 12V Installation The 12V system is the most common solar panel wiring configuration used with batteries for small load ...

[Get Price](#)



**Beginner question about connecting multiple batteries**



### together in parallel

Hi, I soon plan to install the following: 3x multiplus II 10kva in three phase operation. 3x SmartSolar MPPT RS 450,200 solar chargers. 3x 48v batteries (15kWh each) ...

[Get Price](#)



### [Connecting Inverters and Batteries for Maximum Efficiency](#)

Connecting an inverter to two parallel batteries, learning how to connect two inverter generators in parallel, and understanding the nuances of connecting two inverters in parallel ...

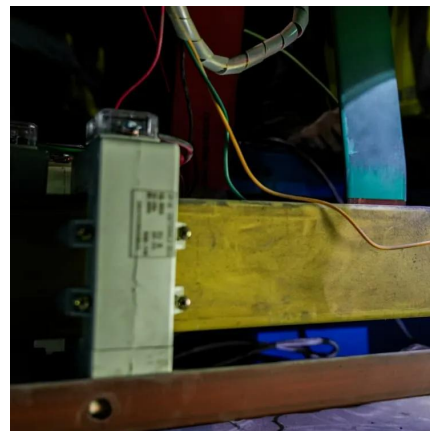
[Get Price](#)



### [Guide to Connecting Batteries in Parallel Properly - PowMr](#)

Learn the safety rules, and wiring tips for connecting batteries in parallel to expand capacity, balance load, and extend energy storage efficiently.

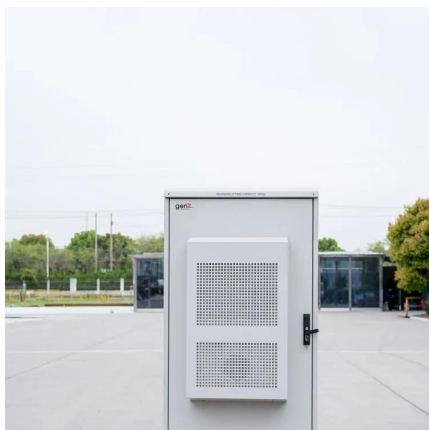
[Get Price](#)



### [Can I connect multiple batteries to an inverter?](#)

Backup Power Systems For businesses or homes that need a reliable backup power source, connecting multiple batteries to an inverter can ensure that you have enough ...

[Get Price](#)



### [Paralleling batteries... Some do's, don'ts and hints...](#)



Putting batteries in parallel adds the Ah capacity, but maintains the voltage. This is common practice for many reasons. Smaller batteries can be easier to handle, are sometimes ...

[Get Price](#)



## Contact Us

---

For catalog requests, pricing, or partnerships, please visit:  
<https://www.germansolar.co.za>

**Scan QR Code for More Information**



<https://www.germansolar.co.za>