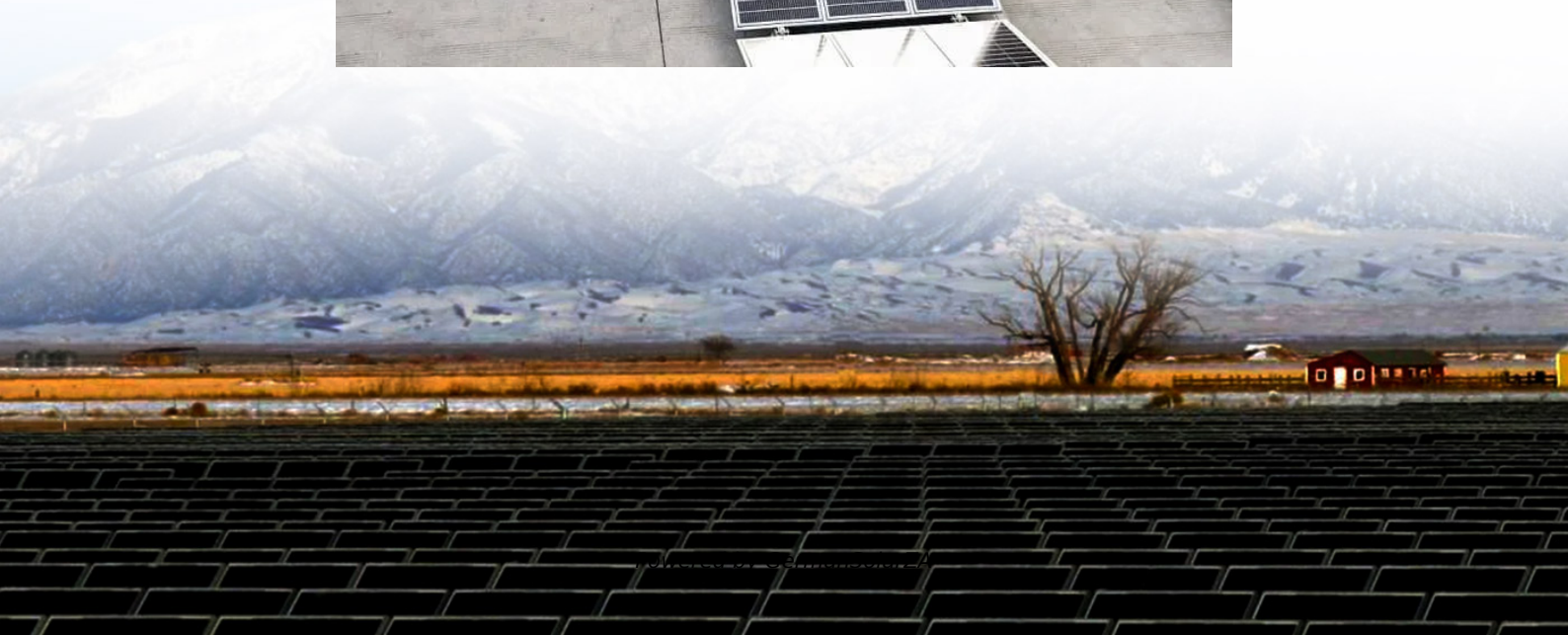


Base station maintenance power module





Overview

What causes a base station to stop working?

Statistics from within the industry indicate that 65 percent of communications interruptions are caused by power supply failures, with 85 percent of them discovered after more than 12 hours, thanks largely to customer complaints. Other challenges to base station operation include heat, fire, flood, and theft.

Why are base stations important?

By Yang Ji Base stations are the key energy consumers on any mobile network; their monitoring and upgrade are essential if operators are to compete.

How do urban radio stations manage power & environmental management?

For urban radio sites, some operators use a multi-layer control system for their power & environmental management. Each city has a power & environmental monitoring system which reports to a higher-level monitoring center.

How does an MCU connect to a Base Transceiver Station (BTS)?

Through a specific channel for site operation and maintenance (O&M), operators can enjoy in-band networking from the MCU to the network operation center. If deployed for a typical 2G site, the MCU connects the O&M channel for the base transceiver station (BTS) through an RS485 serial port.



Base station maintenance power module



Lithium Iron Phosphate Battery Module 48V series 5G Base ...

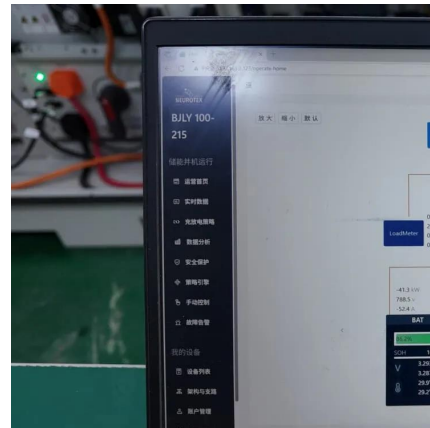
Introducing our Lithium Iron Phosphate Battery Module, the dependable 48V solution designed specifically for ensuring uninterrupted power supply to 5G base transceiver stations during ...

[Get Price](#)

[5G Base Station Power Supply System: NextG Power's ...](#)

Discover NextG Power's 5G micro base station power solutions! Our IP65-rated 2000W/3000W modules and 48V 20Ah/50Ah LFP batteries ensure reliable connectivity.

[Get Price](#)



Power Supply Solutions for Wireless Base Stations Applications

Luckily, MORNSUN has a series of power solutions designed to provide state-of-the-art reliability while also curbing any unnecessary costs related to their installation, application, and ...

[Get Price](#)



[Lithium Iron Phosphate Battery Module 48V...](#)

Introducing our Lithium Iron Phosphate Battery Module, the dependable 48V solution designed specifically for ensuring uninterrupted power supply to 5G base transceiver stations during backup scenarios. Engineered for ...



[Get Price](#)



[Establishing efficient power & environmental monitoring ...](#)

Traditionally, power supply modules and network equipment are managed separately. Through EMS, operators can turn off a carrier but not a power module. Integration of the EMS and the ...

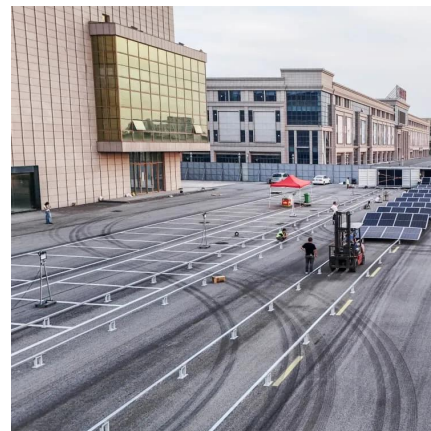
[Get Price](#)



[Establishing efficient power & environmental ...](#)

Traditionally, power supply modules and network equipment are managed separately. Through EMS, operators can turn off a carrier but not a power module. Integration of the EMS and the power & environmental ...

[Get Price](#)



[DAILY MAINTENANCE AND MANAGEMENT OF BASE STATION POWER ...](#)

What are the outdoor power supply modules for base stations AC/DC Rectifier Modules: Utilized in embedded power sources, outdoor power supplies, indoor power supplies, and core data ...

[Get Price](#)



[5G Base Station Power Upgrade: Custom Rectifier Module ...](#)



Upgrade 5G base station power in outdoor, indoor, and shared cabinets with custom rectifier module solutions for efficient, scalable, and reliable performance.

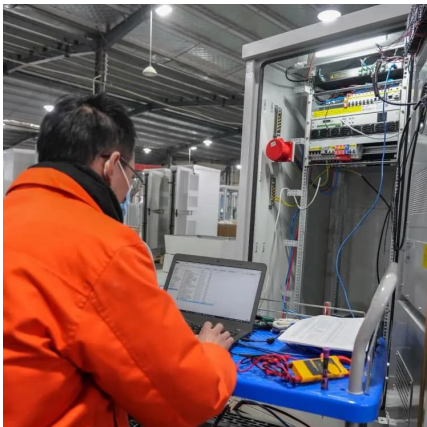
[Get Price](#)



[Telecom Base Station Power System Solution](#)

The EverExceed base station system is equipped with an AC and DC system, which consists of an AC distribution box/panel, a -48V high-frequency switch combined power supply (including ...

[Get Price](#)



Management and maintenance of base station switching power ...

This article focuses on the three parts of switching power supply: "types and usage scenarios, configuration principles and algorithms, and daily management and maintenance".

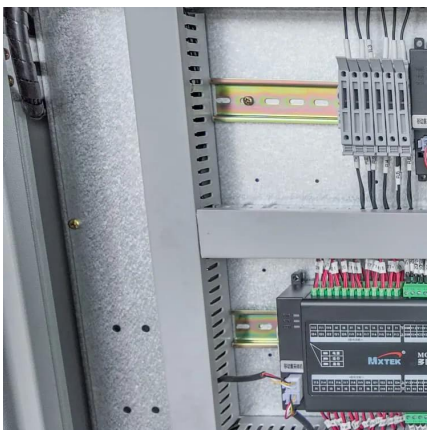
[Get Price](#)



How to Maintain Backup Power Supply for Telecommunications Base Stations?

By following these maintenance practices and implementing robust monitoring and testing procedures, telecommunications operators can ensure the reliability and effectiveness of ...

[Get Price](#)



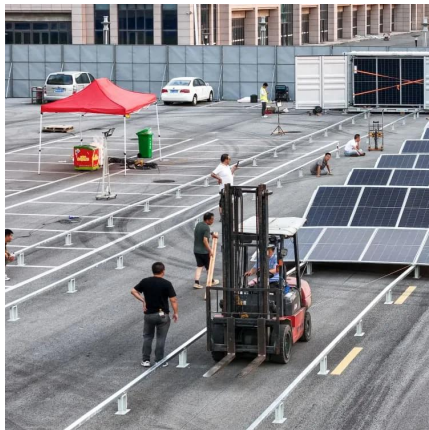
Reliable Solutions for Efficient base station power



module in ...

Discover the benefits of reliable base station power module with high-capacity power and compact design. Perfect for outdoor adventures or emergency backup, ensuring energy independence ...

[Get Price](#)



[Management and maintenance of base ...](#)

This article focuses on the three parts of switching power supply: "types and usage scenarios, configuration principles and algorithms, and daily management and maintenance".

[Get Price](#)

Contact Us

For catalog requests, pricing, or partnerships, please visit:
<https://www.germansolar.co.za>

Scan QR Code for More Information



<https://www.germansolar.co.za>