

BMS system battery series connection





Overview

What is a battery management system (BMS)?

Overcharging can cause swelling, overheating, or even explosions, while deep discharges can permanently degrade the battery. A BMS ensures: Controlled charging and discharging. Voltage and current stabilization. Cell balancing to maintain uniform voltage across cells. Protection against overvoltage, undervoltage, and short circuits.

Why should a BMS be connected in series?

When connecting a BMS in series, it must be equipped to monitor the total voltage of all cells combined. This capability allows the system to ensure that no individual cell exceeds its maximum voltage limit during charging or discharging. 4. Cell Balancing Cell balancing becomes increasingly critical when batteries are connected in series.

What is a BMS connection diagram?

Every wire, MOSFET, resistor, and sensor is positioned carefully to carry out a particular control or protection task. A bms connection diagram typically includes: Battery Cell Connections: Each cell or group of cells is connected via balance leads, allowing the BMS to monitor voltage levels precisely.

Should a battery management system be connected in series?

Connecting multiple batteries without a proper management system is highly discouraged due to increased risks related to overcharging, overheating, and imbalanced discharges. In conclusion, connecting a Battery Management System (BMS) in series can significantly enhance the performance and safety of lithium battery systems when done correctly.



BMS system battery series connection



[1S, 2S, 3S, 4S BMS Circuit Diagram for Li-ion Batteries](#)

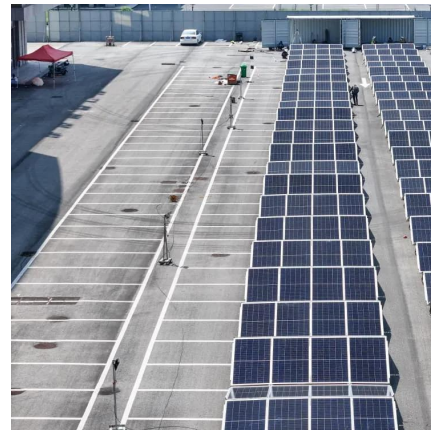
3S Battery Management System (BMS) circuit for lithium-ion batteries. The 3S configuration is a series connection of three cells, requiring a robust BMS to ensure balanced ...

[Get Price](#)

A Guide to BMS Connection

A 3S BMS connection takes the series connection one step further by connecting three battery cells in series. This configuration triples the voltage output compared to a single ...

[Get Price](#)



[How to Connect a BMS to Your Battery Pack](#)

Learn how to connect a BMS to your battery pack with our step-by-step guide. Ensure safety, efficiency, and longevity for your lithium-ion batteries.

[Get Price](#)



Battery Management System Guide: ...

Comprehensive guide to Battery Management Systems (BMS), covering functions, circuits, components, and selection tips for safer, more reliable lithium-ion battery packs.

[Get Price](#)



[Lithium Series, Parallel and Series and Parallel](#)

Lithium Series, Parallel and Series and Parallel Connections Introduction Lithium battery banks using batteries with built-in Battery Management Systems (BMS) are created by ...

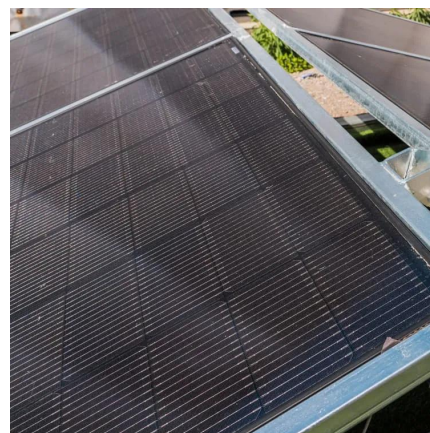
[Get Price](#)



[Series and Parallel BMS Configurations](#)

Discover how to optimize your Battery Management System's performance and safety by selecting the right series and parallel configurations for your specific application.

[Get Price](#)



[Battery Management System Guide: Functions, Circuits](#)

Comprehensive guide to Battery Management Systems (BMS), covering functions, circuits, components, and selection tips for safer, more reliable lithium-ion battery packs.

[Get Price](#)





[How to Connect a BMS in Series: A Step-by-Step DIY Guide](#)

If you're building a high-voltage LiFePO4 system--say, a 24V RV setup (8 cells) or a 48V home solar bank (16 cells)--you'll need to connect your Battery Management System ...

[Get Price](#)



[Lithium Series, Parallel and Series and Parallel](#)

A 3S BMS connection takes the series connection one step further by connecting three battery cells in series. This configuration triples the voltage output compared to a single ...

[Get Price](#)

[How to Connect a BMS to Your Battery Pack](#)

Learn how to connect a BMS to your battery pack with our step-by-step guide. Ensure safety, efficiency, and longevity for your lithium-ion batteries.

[Get Price](#)



[How to Assemble a Battery Pack with a BMS Module . Step ...](#)

Learn how to safely assemble a battery pack with a BMS module. Our step-by-step guide covers materials needed, safety precautions, detailed assembly instructions, and testing ...

[Get Price](#)



Can BMS Be Connected in Series?

In the world of battery management systems (BMS), understanding how to effectively connect and manage multiple batteries is crucial for optimizing performance and safety. One common question ...

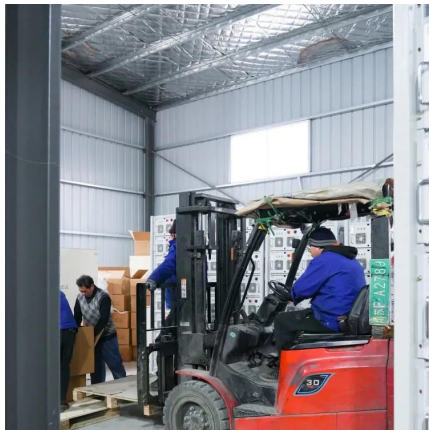
[Get Price](#)



[How to Assemble a Battery Pack with a BMS ...](#)

Learn how to safely assemble a battery pack with a BMS module. Our step-by-step guide covers materials needed, safety precautions, detailed assembly instructions, and testing procedures.

[Get Price](#)



[Understanding BMS Connection Diagram: ...](#)

Understanding BMS Connection Diagram: From MOSFET Control to Cell Balancing To ensure safety, dependability, and efficiency in contemporary lithium-ion and lithium-polymer battery systems, the Battery ...

[Get Price](#)



Can BMS Be Connected in Series?

In the world of battery management systems (BMS), understanding how to effectively connect and manage multiple batteries is crucial for optimizing performance and ...

[Get Price](#)



[Understanding BMS Connection Diagram: From MOSFET ...](#)

Understanding BMS Connection Diagram: From MOSFET Control to Cell Balancing To ensure safety, dependability, and efficiency in contemporary lithium-ion and ...

[Get Price](#)



Contact Us

For catalog requests, pricing, or partnerships, please visit:
<https://www.germansolar.co.za>

Scan QR Code for More Information



<https://www.germansolar.co.za>