

# Amman outdoor signal base station





## Overview

---

What is a base station?

It is a fixed location equipped with antennas and other equipment that receives and transmits radio signals to and from mobile devices, such as smartphones, tablets, and other wireless devices. Base stations are an essential component of cellular networks, providing coverage and connectivity to mobile devices within a specific area or cell.

What is a base station antenna?

The base station antennas transmit and receive RF (radio frequency) signals, or radio waves, to and from mobile phones near the base station. Without these radio waves, mobile communications would not be possible. Radio waves have been used for communication for more than 100 years. Radio and television broadcasting are well-known examples of this.

What is a citizen's band base station antenna?

Citizen's Band base station antennas are typically used for short to medium distance communications and generally operate in the frequency range of 26.965 MHz to 27.405 MHz. These antennas can be either omnidirectional or directional antennas and they are available in a variety of shapes and sizes.

What is a wireless base station?

A base station represents an access point for a wireless device to communicate within its coverage area. It usually connects the device to other networks or devices through a dedicated high bandwidth wire of fiber optic connection. Base stations typically have a transceiver, capable of sending and receiving wireless signals;



## Amman outdoor signal base station

---



### Outdoor Carrier-Grade Antenna-Integrated Mobile Signal Base Station

SW8000CBU is an outdoor carrier-grade antenna-integrated wireless base station that operates in the 5GHz unlicensed frequency band and is a wireless network device ...

[Get Price](#)



[Base Station Antennas , Huge range , Amphenol Procom](#)

Base Station Antennas including Yagi-, Omni-, dipole- and GPS antennas as well of different components by Amphenol Procom. View our collection.

[Get Price](#)

### What Is A Base Station?

A base station is an integral component of wireless communication networks, serving as a central point that manages the transmission and reception of signals between ...

[Get Price](#)



### Outdoor WiFi Base Stations

Shop high-quality outdoor wifi base stations for reliable communication. Enjoy durable, efficient, and long-range wireless networking solutions. Perfect for rural areas.

[Get Price](#)



**Embrace the outdoor**

Streamlined maintenance and operation:  
Building PMR networks with outdoor base stations eliminates the need for batteries, air conditioning units, and large spare parts stocks ...

[Get Price](#)



**Base stations and networks**

Base stations enable mobile communications  
Mobile phones and other mobile devices require a network of base stations in order to function. The base station antennas ...

[Get Price](#)



[What Are Base Station Antennas? Complete ...](#)

Base station antennas play a fundamental role in wireless communication systems by enabling the signal transmission and receiveal between the base stations and mobile devices.

[Get Price](#)



[Base Station Signal enclosure, CATV enclosure](#)



A base station signal enclosure refers to the protective structure or housing used to safeguard the sensitive equipment of a base station, which plays a crucial role in telecommunications networks.

[Get Price](#)



### Base stations and networks

SW8000CBU is an outdoor carrier-grade antenna-integrated wireless base station that operates in the 5GHz unlicensed frequency band and is a wireless network device ...

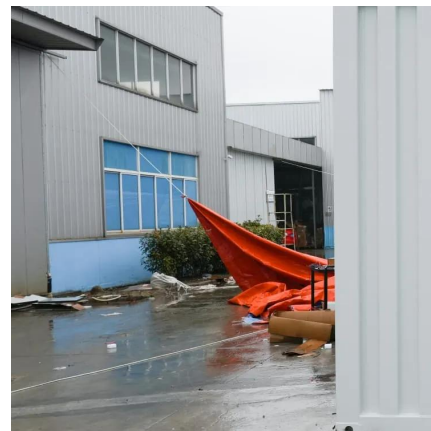
[Get Price](#)



### Base Stations

What is Base Station? A base station represents an access point for a wireless device to communicate within its coverage area. It usually connects the device to other networks or devices through a dedicated ...

[Get Price](#)



### [What Are Base Station Antennas? Complete Guide](#)

Base station antennas play a fundamental role in wireless communication systems by enabling the signal transmission and reception between the base stations and mobile devices.

[Get Price](#)



[Macro base station , Multi-Port High-Gain Base Station ...](#)



Why Choose Macro Base Station Antennas? Wide-Area Coverage : Cover large outdoor regions, urban neighborhoods, rural areas, and highways with fewer antennas. High ...

[Get Price](#)



### Base Stations

What is Base Station? A base station represents an access point for a wireless device to communicate within its coverage area. It usually connects the device to other ...

[Get Price](#)

## Contact Us

---

For catalog requests, pricing, or partnerships, please visit:  
<https://www.germansolar.co.za>

**Scan QR Code for More Information**



<https://www.germansolar.co.za>