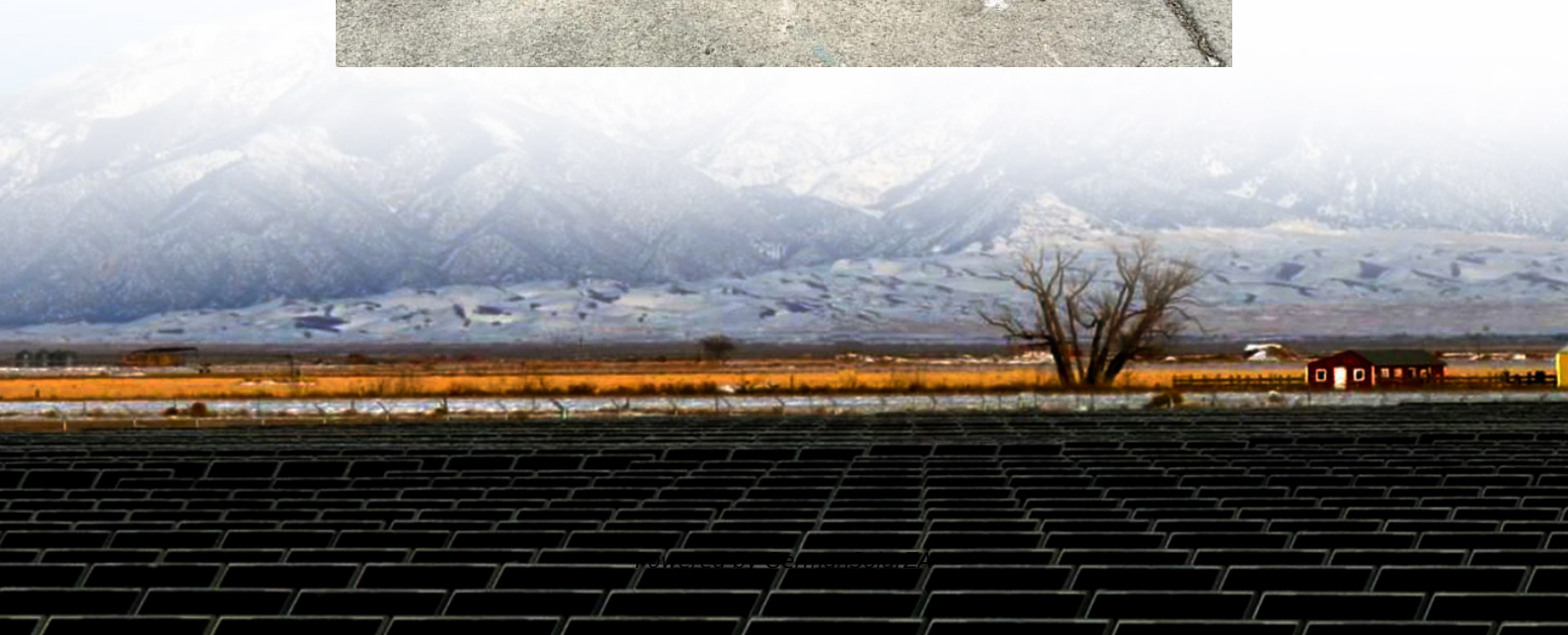


5g base station power introduction assessment





Overview

What equipment is used in a 5G base station?

AAU is the most energy-consuming equipment in 5G base stations, accounting for up to 90% of their total energy consumption. Auxiliary equipment includes power supply equipment, monitoring and lighting equipment. The power supply equipment manages the distribution and conversion of electrical energy among equipment within the 5G base station.

What is a 5G base station energy storage device?

During main power failures, the energy storage device provides emergency power for the communication equipment. A set of 5G base station main communication equipment is generally composed of a baseband BBU unit and multiple RF AAU units. Equation 1 serves as the base station load model:.

What is a 5G base station energy consumption prediction model?

According to the energy consumption characteristics of the base station, a 5G base station energy consumption prediction model based on the LSTM network is constructed to provide data support for the subsequent BSES aggregation and collaborative scheduling.

What is the load of a 5G base station?

The load of a 5G base station primarily consists of communication equipment and auxiliary components. The communication equipment mainly includes Active Antenna Unit (AAU) and Base Band Unit (BBU). AAU is a combination of radio frequency unit and antenna array of 5G base station.



5g base station power introduction assessment



Base station testing

Traditionally base stations have been verified by measuring their performance conductively at the antenna interface. With 5G, we enter a new and exciting era for base ...

[Get Price](#)

Coordinated scheduling of 5G base station energy storage ...

AAU is the most energy-consuming equipment in 5G base stations, accounting for up to 90% of their total energy consumption. Auxiliary equipment includes power supply ...

[Get Price](#)



Strategy of 5G Base Station Energy Storage Participating ...

The energy storage of base station has the potential to promote frequency stability as the construction of the 5G base station accelerates. This paper proposes a control strategy ...

[Get Price](#)



[An Introduction to 5G and How MPS Products Can ...](#)

An Introduction to 5G and How MPS Products Can Optimize a Base Station's AAU and BBU
Introduction 5G is a cellular network technology that is often referred to in ...



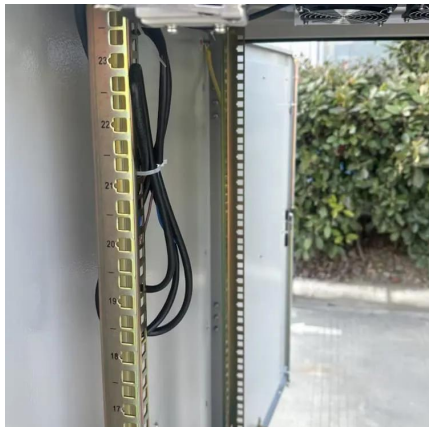
[Get Price](#)



[Human exposure to EMF from 5G base stations: analysis, ...](#)

The use of broadband field probes for 5G exposure assessment is still possible under certain considerations and correcting the results considering the base station load and ...

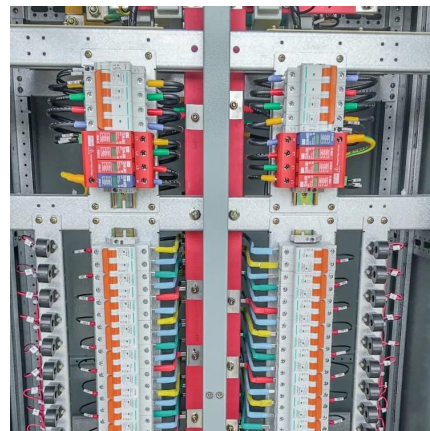
[Get Price](#)



[Study on Power Feeding System for 5G Network](#)

High Voltage Direct Current (HVDC) power supply HVDC systems are mainly used in telecommunication rooms and data centers, not in the Base station. With the increase of ...

[Get Price](#)



[Building better power supplies for 5G base stations](#)

Building better power supplies for 5G base stations
Authored by: Alessandro Pevere, and
Francesco Di Domenico, both at Infineon
Technologies

[Get Price](#)





Base station testing

Traditionally base stations have been verified by measuring their performance conductively at the antenna interface. With 5G, we enter a new and exciting era for base station design. Base stations and Remote ...

[Get Price](#)



[Power Consumption Modeling of 5G Multi-Carrier Base ...](#)

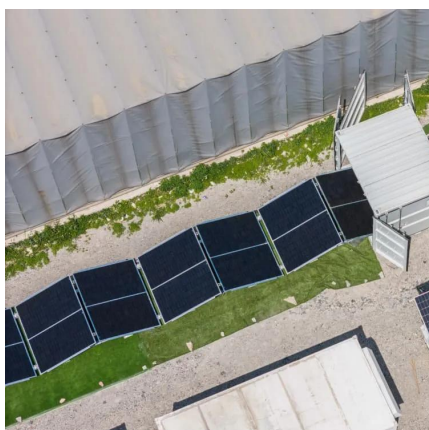
However, there is still a need to understand the power consumption behavior of state-of-the-art base station architectures, such as multi-carrier active antenna units (AAUs), ...

[Get Price](#)

Feasibility study of power demand response for 5G base station

In order to ensure the reliability of communication, 5G base stations are usually equipped with lithium iron phosphate cascade batteries with high energy density and high ...

[Get Price](#)



[Coordinated scheduling of 5G base station ...](#)

AAU is the most energy-consuming equipment in 5G base stations, accounting for up to 90% of their total energy consumption. Auxiliary equipment includes power supply equipment, monitoring and lighting ...

[Get Price](#)



Energy Management of Base Station in 5G and B5G: Revisited

Since mmWave base stations (gNodeB) are typically capable of radiating up to 200-400 meters in urban locality. Therefore, high density of these stations is required for ...

[Get Price](#)



Contact Us

For catalog requests, pricing, or partnerships, please visit:
<https://www.germansolar.co.za>

Scan QR Code for More Information



<https://www.germansolar.co.za>