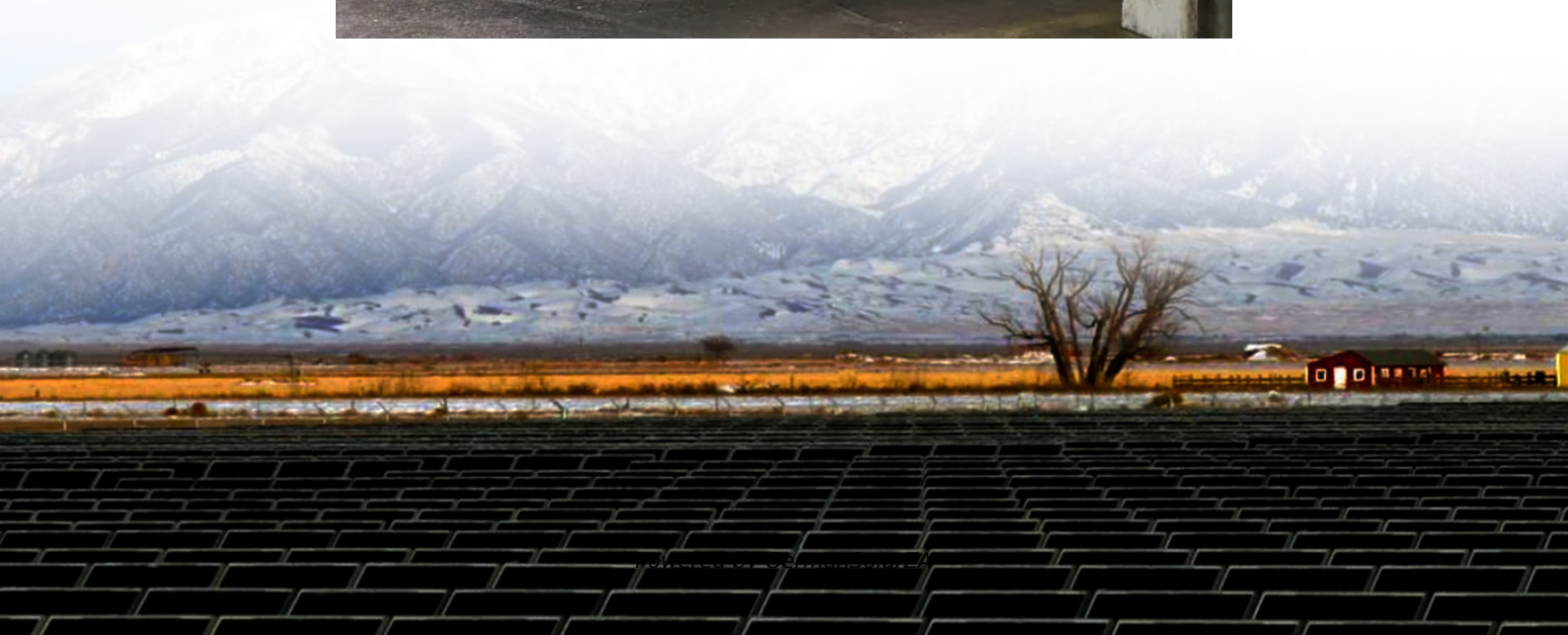


48v DC inverter into AC 220v





Overview

What is a 48 watt inverter?

48V 2000W power inverter with universal socket and USB port, modified sine wave or pure sine wave output waveform are available. Option for 110V/120V or 220V/230V/240V AC 50Hz/60Hz, suitable DC to AC inverter for home use to charge TV, laptop, fans, lights and other appliances. Storage temperature of this 2000 watt inverter between -30 °C to +70 °C.

How does a 48V power inverter work?

In terms of functionality, a 48V power inverter typically consists of several key components. These include a DC input, an inverter circuit that converts DC to AC power, control electronics for regulating the output voltage and frequency, and output sockets or terminals to connect AC-powered devices.

How much power does a 5000W inverter use?

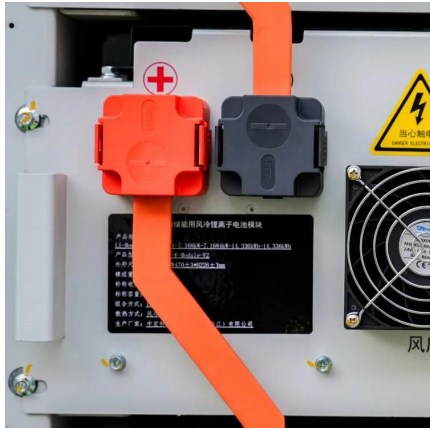
5000W 48V DC to 220V AC pure sine wave inverter. This inverter operates with a 48V DC voltage compatible with SOLISE lithium batteries. It transforms 48V DC (direct current) into 220V AC (alternating current). Peak power : 10 000W <3sec. STANDARDS Certifications : RoHS I CE Warranty - 2 years.

What is the working temperature of a 48V 5000W inverter?

Working temperature of this 48V 5000W inverter between -10 °C to 50 °C. A 48V power inverter is a device used to convert direct current (DC) electrical power from a 48-volt battery or DC power source into alternating current (AC) power. In terms of functionality, a 48V power inverter typically consists of several key components.



48v DC inverter into AC 220v



48v Inverter, 48v DC to 120v/220v AC Power Inverter , inverter...

48V 2000W power inverter with universal socket and USB port, modified sine wave or pure sine wave output waveform are available. Option for 110V/120V or 220V/230V/240V AC ...

[Get Price](#)



[48v dc to 230v 220v ac inverters 240v](#)

Xindun power factory sales inverter 48v to 220v, 48v to 240v, 48vdc to 230vac. AC inverters high frequency design, high power density, high efficiency, low no-load loss.

[Get Price](#)



Inverter 48V 220V

The inverter 48v 220v is specifically designed to convert the DC power stored in 48-volt battery systems into usable 220-volt AC power, which is the standard voltage for most household ...

[Get Price](#)

[How to Choose the Best Inverter 48V 220V for Your Power ...](#)

An inverter 48v 220v converts direct current (DC) from a 48-volt battery bank into alternating current (AC) at 220 volts, which is standard household voltage in many countries ...



[Get Price](#)



[48v Inverter, 48v DC to 120v/220v AC Power ...](#)

48V 2000W power inverter with universal socket and USB port, modified sine wave or pure sine wave output waveform are available. Option for 110V/120V or 220V/230V/240V AC 50Hz/60Hz, suitable DC to AC inverter for home ...

[Get Price](#)



Best 48V DC to 220VAC Inverters for Reliable Off-Grid and ...

Choosing the right 48V DC to 220VAC inverter is essential for powering home appliances, solar off-grid systems, and recreational vehicles efficiently. These inverters convert ...

[Get Price](#)



[Solar 48V Inverters For Sale , 48v DC to 220v AC](#)

Solar 48V inverters for large-scale solar and backup power systems. There are different varieties of such inverters to power commercial and residential applications by converting 48V DC into ...

[Get Price](#)



[48v dc to 230v 220v ac inverters 240v](#)

Xindun power factory sales inverter 48v to 220v, 48v to 240v, 48vdc to 230vac. AC inverters high frequency design, high power density, high efficiency, low no-load loss.

[Get Price](#)



48V DC to 220V AC Inverter

As a trusted source for high-quality power solutions, our 48v DC to 220v AC inverter stands out in the market. This reliable inverter is designed to convert 48v direct current into a ...

[Get Price](#)

Inverter 5000W 48V DC to 220V AC

This inverter operates with a 48V DC voltage compatible with SOLISE lithium batteries. It transforms 48V DC (direct current) into 220V AC (alternating current).

[Get Price](#)



48V DC 220V AC Inverters

Find top-quality 48v dc 220v ac inverters for reliable power conversion. Perfect for solar systems, home use, and more. Shop our range of inverters now!

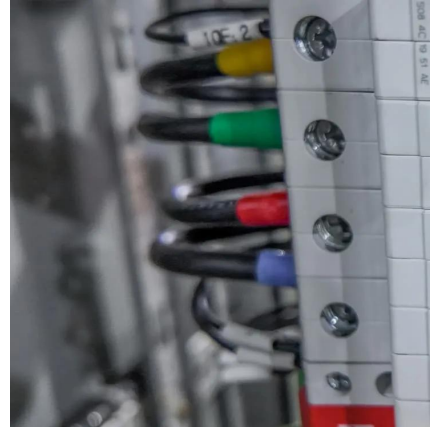
[Get Price](#)



Inverter 5000W 48V DC to 220V AC

This inverter operates with a 48V DC voltage compatible with SOLISE lithium batteries. It transforms 48V DC (direct current) into 220V AC (alternating current).

[Get Price](#)



Amazon : 48v To 220v Inverter

PowMr 10200W Solar Inverter 48V DC to 220V/230V AC Pure Sine Wave Power Inverter Built-in 160A MPPT Controller 10000W Hybrid Inverter for Home RV Off-Grid System, for 48V Lead ...

[Get Price](#)

Contact Us

For catalog requests, pricing, or partnerships, please visit:
<https://www.germansolar.co.za>

Scan QR Code for More Information



<https://www.germansolar.co.za>