

12v inverter to 24 volts





Overview

Can you use a 12V inverter with a 24v battery?

No, you cannot directly use a 12V inverter with a 24V battery. Inverters are designed to match the voltage of the battery they are connected to. Using mismatched voltages can damage the inverter and 2. Is 12V to 24V more efficient than 120V to 24V?

Yes, converting from 12V to 24V is generally more efficient than converting from 120V to 24V.

What is the difference between 12V vs 24V inverters?

Efficiency is an important factor when choosing between 12V vs 24V inverters. In general, 24V inverters are more efficient than their 12V counterparts, especially for larger systems. The efficiency difference becomes more noticeable as you increase the power demand of the system.

What is the difference between 12V and 24v battery systems?

It depends on your system's size, the quality of the inverter, and your power needs. In general, 24V inverters are better for larger systems, while 12V inverters work well for smaller setups. When choosing between 12V and 24V battery systems, it's important to understand their differences. Let's take a look the table below:.

Are 24V inverters a good choice?

The higher efficiency of 24V inverters typically results in lower energy losses and reduced operating costs over time. Additionally, 24V systems generally require thinner, less expensive wiring due to lower current needs. However, 24V batteries and some components may be pricier initially.



12v inverter to 24 volts



12V vs 24V Inverters Key Differences and Which One is Right ...

A 12V inverter is typically more suitable for smaller setups, while a 24V inverter offers enhanced efficiency and is ideal for larger applications.

[Get Price](#)



[Building or buying a 12V DC to 24V AC inverter](#)

I have taken to using old school mechanical relays, switching the 24V AC to the valves. Ideally, I'd like to derive the 24V AC from a 12V DC source, such as a battery or solar ...

[Get Price](#)



[Building or buying a 12V DC to 24V AC inverter](#)

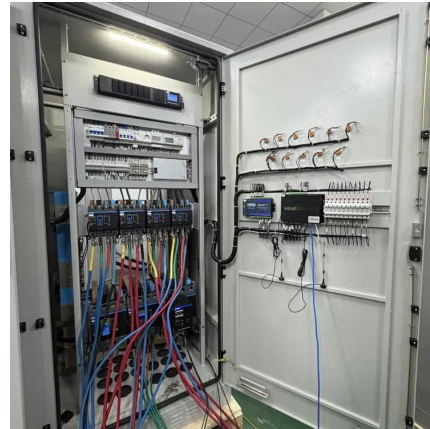
I have taken to using old school mechanical relays, switching the 24V AC to the valves. Ideally, I'd like to derive the 24V AC from a 12V ...

[Get Price](#)

[Can I Run a 12V Inverter on a 24V Battery?](#)

You cannot connect a 12V inverter directly to a 24V battery because 12V inverters are only designed for 12V input, and 24V exceeds their operating range.

[Get Price](#)



inv-12dc-24vac , PowerStream

Unique 24 volt AC inverter rated at 40 watts for use with CCTV and Solar installations. Also suitable for 24VAC irrigation systems, and even 24VAC doorbells. Converts 12 volt dc to 24 ...

[Get Price](#)



Amazon : 12 Volt To 24 Volt Inverter

1-16 of over 1,000 results for "12 volt to 24 volt inverter" Results Check each product page for other buying options. Price and other details may vary based on product size and color.

[Get Price](#)



12V vs 24V inverter

This article introduces how inverter works and compares 12V vs 24V inverter, including the applications, costs, and other differences, also provides a guide on choosing the ...

[Get Price](#)





[12V vs 24V Inverters Key Differences and ...](#)

A 12V inverter is typically more suitable for smaller setups, while a 24V inverter offers enhanced efficiency and is ideal for larger applications.

[Get Price](#)



12 to 24 Volt o DWE

A 12V to 24V DC/DC converter, also known as an inverter, converts the input DC voltage to a 12V stabilised DC voltage. DWE supplies DC/DC converters with various input ...

[Get Price](#)



[12V Inverter vs 24V Inverter -- What Is The Difference](#)

This article will explore the differences between 12v inverter vs 24v inverter, considering factors such as energy loss, battery requirements, and suitability for different ...

[Get Price](#)



12V vs 24V inverter

This article introduces how inverter works and compares 12V vs 24V inverter, including the applications, costs, and other differences, also provides a guide on choosing the voltage and maintenance tips.

[Get Price](#)



[Can I Run a 12V Inverter on a 24V Battery?](#)

You cannot connect a 12V inverter directly to a 24V battery because 12V inverters are only designed for 12V input, and 24V exceeds their operating range.

[Get Price](#)



[Can You Use a 24 volt inverte With a 12V Battery System?](#)

24 Volt Inverter on 12V Battery: Risky Mismatch
Trying to power a 24 volt inverter with half the voltage is like feeding a sports car watered-down fuel--performance collapses ...

[Get Price](#)

[12V vs 24V Inverter: What's The Difference & Which is Better](#)

Torn between 12V and 24V inverters? Discover the key differences in efficiency, cost, and power capacity to determine which is better for your energy needs.

[Get Price](#)



Contact Us

For catalog requests, pricing, or partnerships, please visit:
<https://www.germansolar.co.za>



Scan QR Code for More Information



<https://www.germansolar.co.za>